



Solano Community College District

Workforce Analysis

August 11, 2015



2355 Crenshaw Blvd. 310 212-3344
Suite 200 310 212-0360 BUAD fax
Torrance, CA 90501 www.keenan.com
P.O. Box 4328 License No. 0451271
Torrance, CA 90510

August 11, 2015

Mr. Yulian Ligioso
Vice President, Finance & Administration
Solano Community College District
4000 Suisun Valley Road
Fairfield, CA 94534

Re: Workforce Analysis for Solano Community College District

Dear Mr. Ligioso:

Thank you for giving Keenan & Associates the opportunity to perform and provide you with the attached Workforce Analysis report. This study will help Solano Community College District comply with the requirements of the federal healthcare reform legislation known as the Patient Protection and Affordable Care Act (ACA).

Beginning January 1, 2015, tax penalties will be assessed on large employers who:

- Do not offer “minimum essential coverage” (MEC) to their full-time employees (FTE) and their dependents, or
- Offer coverage that is “unaffordable” or does not provide “minimum value.”

The Workforce Analysis report will evaluate potential exposure to these penalties and provide key information on the ACA impact to your workforce, your benefit plans and your business. The report will identify your FTEs and identify potential issues where benefit or eligibility decisions may need to be reviewed or revised. Please note that the Workforce Analysis does not address the “Affordability” or “Minimum Value” components of the tax penalties under the ACA.

Key Results

- Of the District’s 1,195 total employees who worked during the measurement period between January 1, 2014 through December 31, 2014, 337 employees were identified as having worked more than 30 hours per week and considered to be ACA FTEs.
- Of these 337 employees, coverage was offered to 334, or 99.1% of all ACA FTEs. Thus, the District exceeds the 70% coverage threshold for 2015 and 95% threshold required in 2016 and beyond.

It is important to note that this analysis is based on the District’s historical workforce patterns and does not replace the need to track ongoing hourly work history for the purposes of complying with the ACA’s employer requirements, including reporting, beginning on January 1, 2015.

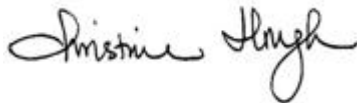
Future Planning

The Workforce Analysis and the Healthcare Reform Impact Study that the District asked Keenan to perform are intended to highlight issues related to the ACA that may impact the District. Keenan is prepared to work closely with Solano Community College District to monitor their plans over time, to help the District develop specific strategies for compliance, and to adapt to the rapidly changing healthcare environment.

Sincerely,



Bob Schoenherr, CLU, ChFC, RHU, ChHC
Senior Vice President



Christine Hough, FSA, MAAA
Vice President & Actuary

Disclaimer: Keenan & Associates is an insurance brokerage and consulting firm. It is not a law firm or an accounting firm. We do not give legal advice or tax advice and no opinion, suggestion or recommendation of the firm or its employees shall constitute legal advice. You are advised to follow up with your own legal counsel and/or tax advisor for a determination of your legal rights, responsibilities and liabilities, including the interpretation of any statute or regulation, or its application to your business activities. The Analysis performed by Keenan relied on the employee data provided by you and no independent verification of the data was performed, including, but not limited to, whether an individual is a common law employee or independent contractor. Please note that the validity of the Analysis findings may be compromised if the data submitted was incorrect or incomplete.

**Solano Community College District
Workforce Analysis**

Table of Contents

Description of Workforce Analysis Process and Results..... 4

Table 1: ACA FTE and Non-FTE Workforce Analysis and Coverage Summary 6

Table 2: Workforce Summary by Employee Classification 7

Table 3: Measurement, Administrative, and Stability Periods Specifications 7

Table 4: Variable Hour Measurement Period Variation Scenarios 8

Appendix A..... 9

I: The Penalties 9

II: Look-back Safe Harbor 10

Table 5: Variable Hour Workforce Cohort Summary 14

Table 6: Variable Hour Workforce Distribution Flowchart..... 15

Table 7: Variable Hour Workforce Analysis of Average Weekly Hours Per Month 17

Table 8: Variable Hour Workforce Distribution of Average Hours Per Week..... 19

Appendix B 20

Solano Community College District Workforce Analysis

Keenan & Associates analyzed Solano Community College District's workforce to help the District evaluate how its health benefits coverage and eligibility policies may be impacted by the ACA. Specifically, the Workforce Analysis examined the composition of the District's workforce as defined by the ACA in order to assist the District in determining any potential tax liability and in developing a Healthcare Reform compliance strategy.

The following employee categories are typically used by most employers to describe their workforce:

- Full-time Employees (Salaried and Hourly)
- Part-time Employees (Salaried and Hourly)
- Temporary Employees
- Seasonal Employees

The ACA's definitions and descriptions of employee categories are quite different. The ACA requires an employer to segment its workforce into the following categories:

- Ongoing Full-time Employees (Salaried and Hourly)
- Ongoing Part-time Employees (Salaried and Hourly)
- New Full-time Employees (Salaried and Hourly)
- New Part-time Employees (Salaried and Hourly)
- New "Variable Hour" and Seasonal Employees

Keenan's Workforce Analysis reviewed and categorized the District's workforce according to these ACA definitions. The categories were then evaluated to determine the number of full-time employees (FTEs), as defined by the ACA, in the District's workforce based on hourly work history and to estimate any potential tax liability. A critical component of this Analysis is the determination of how many variable hour or seasonal employees would qualify as ACA FTEs based on hourly work history. For those variable hour or seasonal employees who are deemed to be FTEs, employers may be required to offer benefits to these employees, or potentially face a tax penalty assessment from the Internal Revenue Service (IRS).

Workforce Analysis – The Results

Keenan analyzed Solano Community College District's workforce from January 1, 2014 through December 31, 2014 to determine:

- a) The total number of ACA FTEs;
- b) The total number of ACA non-FTEs;
- c) The percentage of ACA FTEs offered coverage;
- d) The estimated penalties Solano Community College District may be subject to for not offering coverage to its ACA FTEs; and
- e) The impact on the Analysis by varying the measurement periods.

The results of this Analysis are shown in **Table 1 – ACA FTE and Non-FTE Workforce Analysis and Coverage Summary**. During the January 1, 2014 through December 31, 2014 measurement period, Solano Community College District had 1,195 total employees, which consisted of 337 employees who earned an average of 30 hours of service or more per week, 632 employees who earned an average of less than 30 hours of service per week, 176 employees who were newly hired and had not completed their measurement period, and 50 employees who terminated.

The 337 employees referenced above consist of 1) 331 employees who were identified as regular full-time employees and, for the purposes of this analysis, are assumed to be ACA FTEs and 2) 6 employees who were identified in the data as part-time, but found to average over 30 hours of service per week during the measurement period.

Because 334 of 337 ACA FTEs were offered medical coverage, the District has exceeded the 95% MEC test by a margin of 4.1%. Furthermore, as explained in the section titled, “Transitional Relief for 2015” on page 10, the 95% threshold has been reduced to 70% until the beginning of the 2016 plan year. It is important to point out that the District could still be subject to a \$3,000 penalty for each of the three individuals not offered coverage if they purchase subsidized coverage through the Exchange. If all purchase subsidized coverage through Covered California, the penalty would be \$9,000.

Additionally, the District offered coverage to 2 employees who averaged less than 30 hours per week and did not qualify as ACA FTEs.

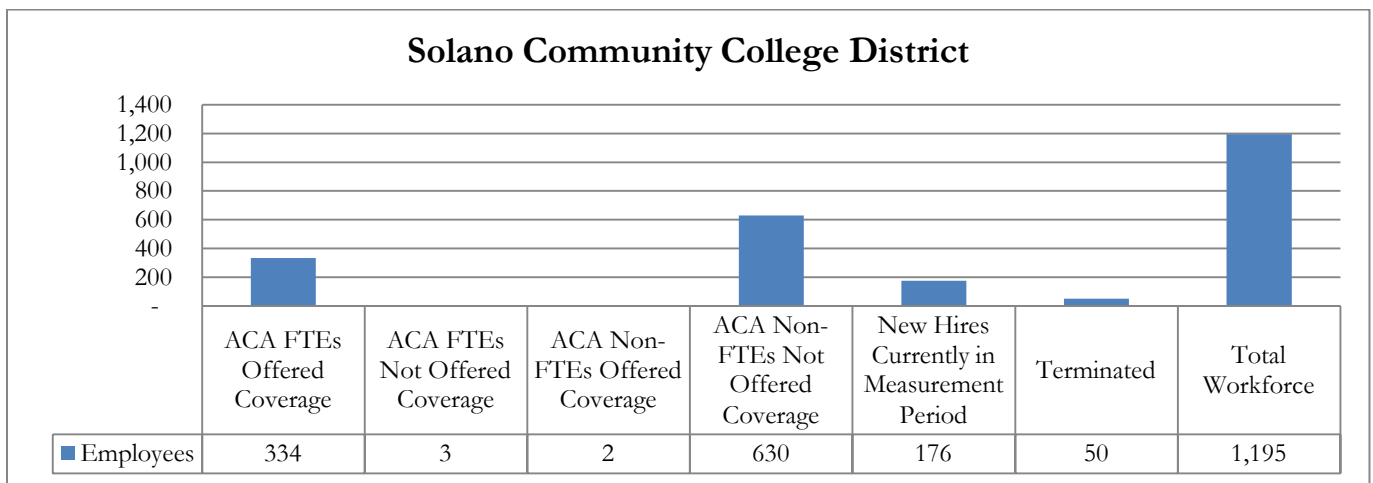
Based on the results of this Analysis, Keenan can assist Solano Community College District with developing a financially sustainable compliance strategy. The analysis is based on the District’s historical workforce patterns and does not replace the need to track ongoing hourly work history for the purposes of complying with the ACA’s employer requirements, including reporting, beginning on January 1, 2015.

Please note: The Workforce Analysis evaluates the employer’s workforce only and does not address the “Affordability” or “Minimum Value” components of the ACA.

**Table 1 – ACA FTE and Non-FTE Workforce Analysis and Coverage Summary
Solano Community College District**

TOTAL WORKFORCE			IDENTIFICATION OF ACA FTEs		
Employee Classification	Employees	Percent	ACA FTE During Measurement Period	Employees	Percent
ACA FTEs Offered Coverage	334	27.9%	Yes	334	99.1%
ACA FTEs Not Offered Coverage	3	0.3%	Yes	3	0.9%
ACA Non-FTEs Offered Coverage	2	0.2%	No	-	0.0%
ACA Non-FTEs Not Offered Coverage	630	52.7%	No	-	0.0%
New Hires Currently in Measurement Period	176	14.7%	No	-	0.0%
Terminated	50	4.2%	No	-	0.0%
Total Workforce	1,195	100.0%	Total ACA FTEs	337	100.0%

95% REQUIREMENT		Employees	Percent
Total Number of ACA FTEs to be Offered Coverage		337	
Minimum Number of ACA FTEs to be Offered Coverage		321	95.0%
Actual Number of ACA FTEs Offered Coverage		334	99.1%



Notes:

- Information is current as of 12/31/2014.
- The District offered coverage to 99.1% of its ACA FTEs, exceeding the 70% coverage threshold for 2015 and the 95% threshold required in 2016 and beyond.
- There were three employees who averaged more than 30 hours per week and were not offered coverage. A maximum penalty of \$9,000 may be incurred for these individuals if they all purchase subsidized coverage through the Exchange.
- The District offered coverage to 2 employees who averaged less than 30 hours of service per week and therefore did not qualify as ACA FTEs.

Table 2 – Workforce Summary by Employee Classification

Table 2 identifies the number of ACA FTEs, ACA Non-FTEs, new hires, and terminated employees within each of the District’s employee classifications.

	Certified	Classified-Union	Non-Union	Total
ACA FTEs	167	138	32	337
ACA Non-FTEs	341	6	285	632
New Hires	44	1	131	176
Terminated	21	20	9	50
Total	573	165	457	1,195

Table 3 – Measurement, Administrative, and Stability Periods Specifications

In order to determine the ACA FTE status of the District’s employees, a measurement period between three and 12 months must be used to count the hours of service for each employee. Table 3 illustrates the lengths of the measurement, administrative, and stability periods used for the District’s ongoing and new employees.

Period	Ongoing Employee	New Employee
Measurement Period	12 months	12 months
Administrative Period	3 months	1 month
Stability Period	12 months	12 months

Note: New employees who are reasonably expected to be FTEs on their Start Date must be offered coverage by the first day of the fourth calendar month of employment. See Appendix A for more information on the measurement, administrative, and stability periods applicable to ongoing and new employees.

The District must make a decision about their measurement, administrative, and stability periods. For the Workforce Analysis, Keenan used the measurement period of January 1, 2014 through December 31, 2014.

Table 4 – Variable Hour Measurement Period Variation Scenarios

In order to determine whether the length of the measurement period had any impact on the number of the District’s ACA FTEs, Keenan varied the measurement periods between three and 12 months.

Variable Hour Measurement Period Variation Scenarios			
Months In Measurement Period	Ongoing ACA FTEs	New ACA FTEs	Total ACA FTEs
3	11	0	11
4	11	0	11
5	10	0	10
6	9	1	10
7	9	1	10
8	9	1	10
9	8	2	10
10	7	2	9
11	6	3	9
12	6	3	9

Note: These results reflect an ongoing administrative period of 3 months, a new hire administrative period of 1 month (with the measurement period and new hire administrative period being a maximum of 13 months), and a stability period of 12 months.

Table 4 shows that varying the measurement periods from three to 12 months does not make a significant difference in the number of ACA FTEs.

In general, a 12-month measurement period is recommended, as it tends to smooth out fluctuations that may occur with shorter measurement periods, and is usually easier to coordinate with the measurement and stability periods for the various employee categories.

Disclaimer: Keenan & Associates is an insurance brokerage and consulting firm. It is not a law firm or an accounting firm. We do not give legal advice or tax advice and no opinion, suggestion or recommendation of the firm or its employees shall constitute legal advice. You are advised to follow up with your own legal counsel and/or tax advisor for a determination of your legal rights, responsibilities and liabilities, including the interpretation of any statute or regulation, or its application to your business activities. The Analysis performed by Keenan relied on the employee data provided by you and no independent verification of the data was performed, including, but not limited to, whether an individual is a common law employee or independent contractor. Please note that the validity of the Analysis findings may be compromised if the data submitted was incorrect or incomplete.

Appendix A

The following provides some basic background information on the penalties large employers may be subject to under the ACA for failing to offer affordable, minimum value coverage to their FTEs, as well as the transition relief provided by the IRS for 2015. Also provided is a broad overview of the look-back safe harbor method that employers may use to prospectively manage their risk exposure.

I. The Penalties

While there is a significant amount of detail related to how the penalties are determined under the ACA, the following provides a high-level overview of the two penalties that may impact large employers.

Employer Does Not Offer MEC

If an employer does not offer MEC to at least 95% of their FTEs and their dependents, and just one FTE obtains coverage through the California state exchange (*Covered California*), and the FTE receives a federal subsidy (premium tax credit) to purchase the exchange coverage, the applicable penalty will equal \$2,000 per year per FTE multiplied by the entire FTE population (excluding the first 30 FTEs).¹

For purposes of these penalties, the ACA defines MEC broadly to include any eligible employer-sponsored plan offered in either the small or large group market, and includes grandfathered plans.²

Employer Offers MEC

An employer may still be subject to a penalty even if it offers MEC to 95% or more of its full-time workforce if the coverage is not offered to all FTEs, is either “unaffordable” or does not provide “minimum value,” and at least one FTE obtains coverage through *Covered California*, and the FTE qualifies to receive a premium tax credit to purchase the exchange coverage.³

Coverage is considered “unaffordable” if the employee’s self-only premium contribution to participate in the employer’s lowest-cost plan that provides minimum value is more than 9.5% of the employee’s household income.⁴ An employer’s plan does not provide “minimum value” if the plan pays less than 60% of the allowable plan costs.⁵

The applicable penalty is \$3,000 per FTE who obtains coverage through the Exchange and receives a premium tax credit. However, the total penalties for employers whose plans do not meet these requirements cannot exceed the maximum penalty the employer would pay for not offering coverage.⁶

¹ 26 U.S.C. § 4980H(a).

² *Id.* at § 5000A(f).

³ *Id.* at § 4980H(b).

⁴ *Id.* at § 36B(c)(2)(C)(i)(II).

⁵ *Id.* at § 36B(c)(2)(C)(ii).

⁶ *Id.* at § 4980H(b).

Transition Relief for 2015

The effective date of the penalties, originally scheduled for January 1, 2014, was postponed to January 1, 2015. On February 10, 2014, the IRS released final regulations, which include some transitional relief for 2015.

For employers with 100 or more full-time employees, including full-time equivalent employees, the final regulations provide limited transition relief from the \$2,000 per FTE penalty for employers who do not offer MEC. The relief applies to both calendar and off-calendar year plans beginning on or after January 1, 2015 provided that the employer does not modify its plan year after February 9, 2014 to start at a later date.

Under the transition relief, a large employer offering coverage to at least 70% of its full-time employees will not be subject to a penalty for each month of 2015, including any months in 2016 that are part of the 2015 plan year. This is a notable change for non-calendar year plans, which will need to come into compliance with the 95% requirement for plan years beginning in 2016. However, this relief is applicable only to the \$2,000-per-FTE penalty. Large employers will continue to be subject to the \$3,000-per-FTE penalty starting on January 1, 2015.

Note, the transition relief is applicable only to the imposition of penalties. All large employers will still be required to report in 2016 under IRC section 6056 about the coverage offered to their workforce for the 2015 calendar year.

II. Look-back Safe Harbor

In order to prospectively manage any penalty liability exposure, the IRS provides a safe harbor method that allows employers to identify their FTEs by “looking back” over a specified measurement period of up to 12 months to count the hours of service and determine whether an employee is or is not full-time. Based on the determination at the end of the measurement period, the employee’s status is defined for a separate stability period of up to 12 months that follows the measurement period.

This safe harbor method can be particularly useful for employers with a large variable hour workforce since these employees may average 30 hours or more per week (the equivalent of 130 hours or more per month) only during certain times of the year but average less than 30 hours per week the remainder of the year. The following provides a broad overview of the look-back safe harbor method and key terms.

Full-Time Employee

The ACA defines an FTE as an employee who earns an average of 30 hours of service per week, or 130 hours per month.⁷ This definition applies for determining any of Solano Community College District’s tax penalties even if the District uses a different definition of FTE. Under the ACA, an employer’s entire workforce should be analyzed to determine whether there is potential tax exposure as a result of not offering MEC to at least 95% of the ACA defined FTEs. The analysis must include not only full-time salaried workers, but also “variable hour” employees who average 30 hours of service or more per week, or 130 hours or more per month, whether or not they are offered coverage by the District.

⁷ Treas. Reg. § 54.4980H-1(21)(i).

Ongoing Employees

For purposes of the look-back method, the IRS distinguishes between ongoing and new employees. An ongoing employee is an employee who has been employed for at least one standard measurement period.⁸

A standard measurement period is a period of time chosen by the employer that is between three and 12 consecutive months.⁹ During the standard measurement period, an employee who averages 30 or more hours of service per week, or 130 hours or more per month, is deemed an FTE for the associated stability period.¹⁰ Accordingly, the FTE should be offered coverage for the duration of the stability period in order for the employer to avoid a potential penalty. If the employee does not average 30 or more hours of service per week, or 130 hours or more per month, then the employee is not full-time for the associated stability period and does not need to be offered coverage.¹¹ The stability period must be at least six consecutive calendar months but no shorter than the standard measurement period.¹²

Employers may also use an optional administrative period between the standard measurement period and stability period of up to 90 days for ongoing employees.¹³ This administrative period is intended to be used to perform any administrative tasks related to the look-back method, such as evaluating the full-time status of employees and enrolling in coverage.

New Employees

Under the look-back method, new employees are those who are considered at their start date to be a new full-time, new part-time, new variable hour or new seasonal employee. A new employee who is reasonably expected to average 30 or more hours of service per week, or 130 hours or more per month, on his or her start date is considered a new FTE. These employees should be offered coverage no later than the first day of the fourth calendar month of employment or otherwise the employer may be subject to a penalty.¹⁴

Factors to be considered when determining whether a new employee is reasonably expected to average 30 or more hours of service per week include, but are not limited to, whether the employee is replacing an employee who was or was not a full-time employee, the extent to which employees in the same or comparable positions are or are not full-time, and whether the job was advertised, or otherwise communicated to the new hire as requiring hours of service that would average 30 or more per week or less than 30 hours per week.¹⁵

The term variable hour employee means, based on the facts and circumstances at the employee's start date, the employer cannot determine whether the employee is reasonably expected to be employed on average at least 30 hours of service per week during the initial measurement period because the employee's hours are variable or otherwise uncertain.¹⁶

⁸ Treas. Reg. § 54.4980H-1(31).

⁹ *Id.* at § 54.4980H-1(46).

¹⁰ *Id.* at § 54.4980H-3(d)(1)(iii).

¹¹ *Id.* at § 54.4980H-3(d)(1)(iv).

¹² *Id.* at § 54.4980H-3(d)(1)(iii).

¹³ *Id.* at § 54.4980H-3(d)(1)(vi).

¹⁴ *Id.* at § 54.4980H-3(d)(2)(iii).

¹⁵ *Id.* at § 54.4980H-3(d)(2)(ii).

¹⁶ *Id.* at § 54.4980H-1(49)(i).

Factors to be considered when determining whether a new employee is a variable hour employee include, but are not limited to, whether the employee is replacing an employee who was a full-time employee or variable hour employee, the extent to which the hours of service of employees in the same or comparable positions have actually varied above and below an average of 30 hours of service per week during recent measurement periods, and whether the job was advertised, or otherwise communicated to the new employee as requiring hours of service that would average at least 30 hours of service per week. These factors are only relevant for a particular new employee if the employer has no reason to anticipate that the facts and circumstances related to that new employee will be different. In all cases, no single factor is determinative.¹⁷

The term seasonal employee means an employee who is hired into a position for which the customary annual employment is six months or less.¹⁸ The reference to customary means that by the nature of the position an employee typically works for a period of six months or less, and that period should begin each calendar year in approximately the same part of the year, such as summer or winter. In certain unusual circumstances, an employee can still be considered a seasonal employee even if the seasonal employment is extended in a particular year beyond its customary duration. For example, if ski instructors at a resort have a customary period of employment of six months, but are asked in a particular year to work an additional month because of an unusually long or heavy snow season, they would still be considered seasonal employees.¹⁹

For determining whether new part-time, new variable hour or new seasonal employees meet the definition of an FTE under the look-back method, employers use a similar process as discussed above for ongoing employees. The employer uses an initial measurement period of time chosen by the employer that is between three and 12 consecutive months. The measurement period begins on the employee's start date or the first day of the calendar month following their start date.²⁰ If the employee averages more than 130 monthly hours of service earned (the equivalent of 30 hours per week) during the measurement period, the employee meets the definition of an FTE. Accordingly, the employer should offer coverage to the employee for the duration of the associated stability period in order to avoid being subject to potential penalties. The stability period must be at least as long as the measurement period, or at least six months in length, for employees determined to be full-time.²¹ Lastly, employers have the option of using an administrative period for new part-time, variable hour or seasonal employees; however, the length of the measurement period and administrative period combined cannot be longer than 13 months.²²

Breaks-in-Service

The regulations provide rules for employees who are rehired after termination of employment. For non-educational organizations, if the period for which no hours of service are credited is at least 13 weeks, an employer may treat the employee who has an hour of service after that period, for purposes of determining the employee's status as an FTE, as having terminated employment and having been rehired as a new employee.²³ Alternatively, the employer may choose to apply a rule of parity for periods of less than 13 weeks. Under the rule of parity, an employee may be treated as having terminated employment and been rehired as a new employee if the period with no credited hours of

¹⁷ *Id.* at §54.4980H-1(49)(ii)(A).

¹⁸ *Id.* at §54.4980H-1(38).

¹⁹ 79 Fed. Reg. 8544, 8557-58.

²⁰ Treas. Reg. §54.4980H-3(d)(3)(i).

²¹ *Id.* at §54.4980H-3(d)(3)(iii).

²² *Id.* at §54.4980H-3(d)(3)(vi).

²³ *Id.* at §54.4980H-3(d)(6)(i).

service (that is less than 13 weeks) is at least four weeks long, and longer than the employee's period of employment immediately preceding the period with no credited hours of service.²⁴

For educational organizations, if the period for which no hours of service are credited is at least 26 consecutive weeks, an employer may treat the employee who has an hour of service after that period, for purposes of determining the employee's status as an FTE, as having terminated employment and having been rehired as a new employee.²⁵ Alternatively, the employer may use the rule of parity for periods of less than 26 weeks.

Based on the above breaks-in-service rules, an employer cannot classify an employee who was recently hired as a new employee without determining whether or not the employee had previous work history with the employer. Additionally, there may be employees who have not been terminated, but have no credited work hours for the requisite time period and no special leave entitlements (e.g. FMLA). In this case, even though the employee was not terminated, the employee would be considered a "new" employee for the purposes of determining full-time status under the ACA.

²⁴ *Id.* at §54.4980H-3(d)(6)(iv).

²⁵ *Id.* at §54.4980H-3(d)(6)(ii).

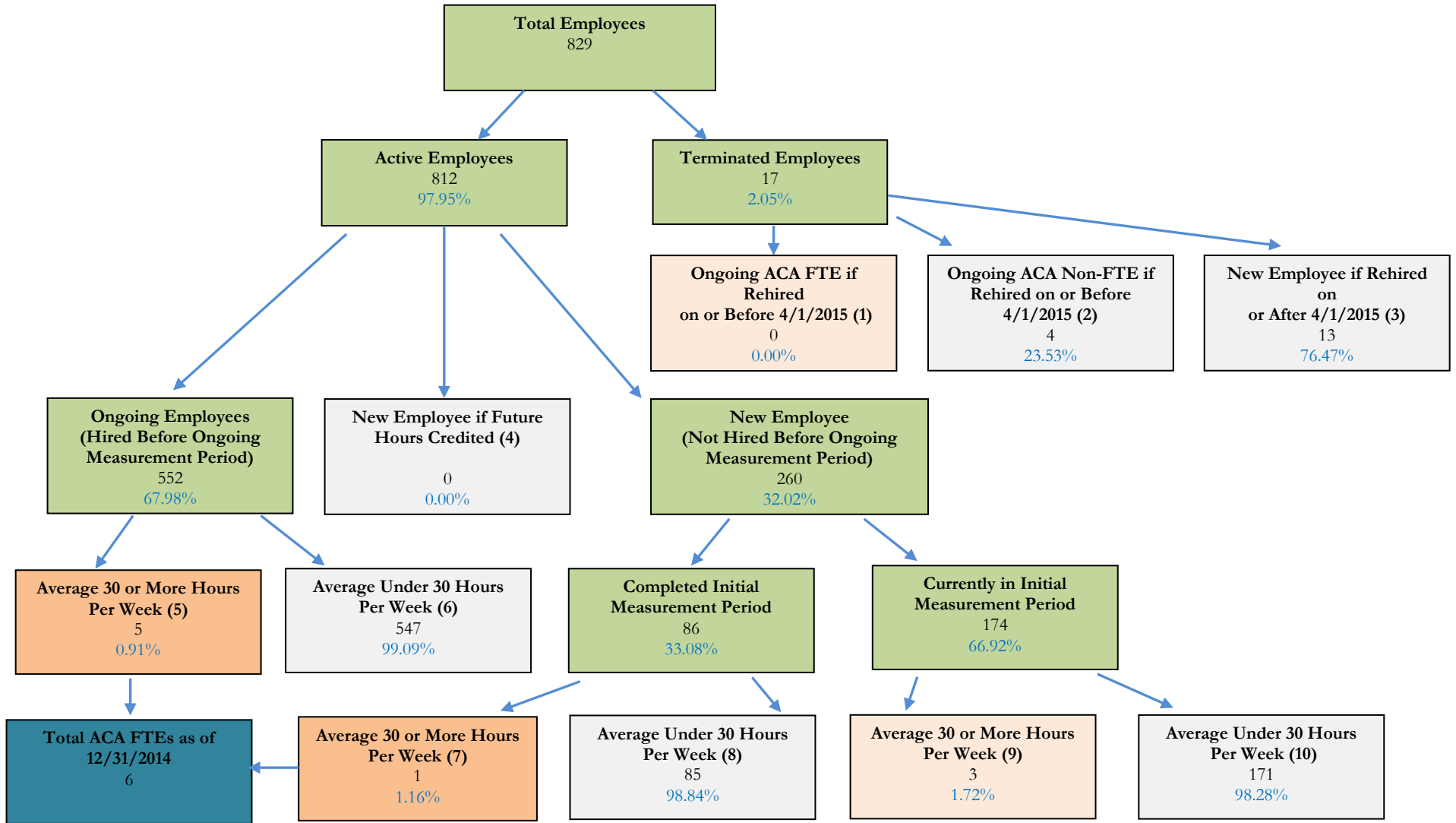
Tables 5 & 6 – Variable Hour Workforce Cohort Summary & Distribution Flowchart

Solano Community College District provided hourly workforce data for the 12-month time period ranging from January 1, 2014 to December 31, 2014. Each employee was classified into one of 10 employee cohorts by taking into consideration whether the employees were active or terminated plus the average hours worked per week. Table 5 illustrates the number of employees in each cohort and Table 6 depicts a flowchart of the employees in each cohort. Definitions for each cohort are provided following Table 6.

Table 5 – Variable Hour Workforce Cohort Summary

Employee Status	Description	Cohort	Should Be Offered Coverage?	Number of Employees	Percentage Distribution
Active – Average Hours Equal to or Over 30 per Week	Ongoing Employees	5	Yes	5	0.6%
	New Employees, Completed Initial Measurement Period	7	Yes	1	0.1%
	New Employees, Currently in Initial Measurement Period	9	No	3	0.4%
	Subtotal			9	1.1%
Active – Average Hours Under 30 per week	Ongoing Employees	6	No	547	66.0%
	New Employees, Completed Initial Measurement Period	8	No	85	10.3%
	New Employees, Currently in Initial Measurement Period	10	No	171	20.6%
	Subtotal			803	96.9%
Active – Other	New Employees if Future Hours Credited	4	Possibly	0	0.0%
Terminated	Ongoing Employee & ACA FTE if Rehired	1	Yes	0	0.0%
	Ongoing Employee & Not ACA FTE if Rehired	2	No	4	0.5%
	New Employee if Rehired	3	Possibly	13	1.6%
	Subtotal			17	2.1%
Grand Total				829	100.0%

Table 6 – Variable Hour Workforce Distribution Flowchart
Solano Community College District
Census Data as of 12/31/2014



Employee Cohort Definitions

- 1) **Terminated Employee, FTE on Stability Start Date if Rehired as Existing Employee** – This classification reflects terminated employees who worked on average 130 hours or more per month during a completed ongoing or new hire measurement period, and would be considered an ACA FTE who should be offered coverage if rehired.
- 2) **Terminated Employee, Not FTE on Stability Start Date if Rehired as Existing Employee** – This classification reflects terminated employees who would not be considered an ACA FTE, and do not need to be offered coverage on the stability period start date if rehired. They also would not be considered a “new employee” under the break-in-service rules.
- 3) **Terminated Employee, Considered New Employee** – This classification reflects terminated employees who would be considered a new employee if rehired.
- 4) **Active Employee, New Employee if Future Hours Credited** – This classification reflects employees who are considered active by the hire and termination dates analysis but are considered a new employee if future hours are credited.
- 5) **Active Employee, Hired Before Ongoing Measurement Period, Averaging Over 30 Hours** – This classification reflects employees who are active, hired prior to the beginning of the ongoing measurement period, and averaged at least 30 hours per week during the measurement period, making them an ACA FTE who should be offered coverage at the beginning of the stability period.
- 6) **Active Employee, Hired Before Ongoing Measurement Period, Averaging Under 30 Hours** – This classification reflects employees who are active, hired prior to the beginning of the ongoing measurement period, and averaged less than 30 hours a week during the measurement period. These employees are not ACA FTEs and do not need to be offered coverage at the beginning of the stability period.
- 7) **Active Employee, Hired After Ongoing Measurement Period Start, Completed New Hire Measurement Period, Averaged Over 30 Hours** – This classification reflects employees who were hired after the beginning of the ongoing cycle and are classified as new employees; however, they have completed the new employee measurement period and averaged at least 30 hours per week, making them ACA FTEs who should be offered coverage at the beginning of the stability period.
- 8) **Active Employee, Hired After Ongoing Measurement Period Start, Completed New Hire Measurement Period, Averaged Under 30 Hours** – This classification reflects employees who were hired after the beginning of the ongoing cycle and are therefore classified as new employees; however, they have completed the new employee measurement period. They averaged less than 30 hours per week and thus are not ACA FTEs. Accordingly, these employees do not need to be offered coverage at the beginning of the stability period.
- 9) **Active Employee, Hired After Ongoing Measurement Period Start, Currently in Initial Measurement Period, Averaging Over 30 Hours** – This classification reflects employees who were hired after the beginning of the ongoing cycle and have not yet completed their initial measurement period. However, if they continue to average the same amount of hours as they do currently, they will become an ACA FTE and should be offered coverage at the beginning of the stability period.

- 10) **Active Employee, Hired After Ongoing Measurement Period Start, Currently in Initial Measurement Period, Averaging Under 30 Hours** – This classification reflects employees who were hired after the beginning of the ongoing cycle and have not yet completed their initial measurement period. However, if they continue to average the same amount of hours as they currently work, they will not have enough to be considered an ACA FTE and will not need to be offered coverage at the beginning of the stability period.

Tables 7 & 8 – Average Weekly Hours

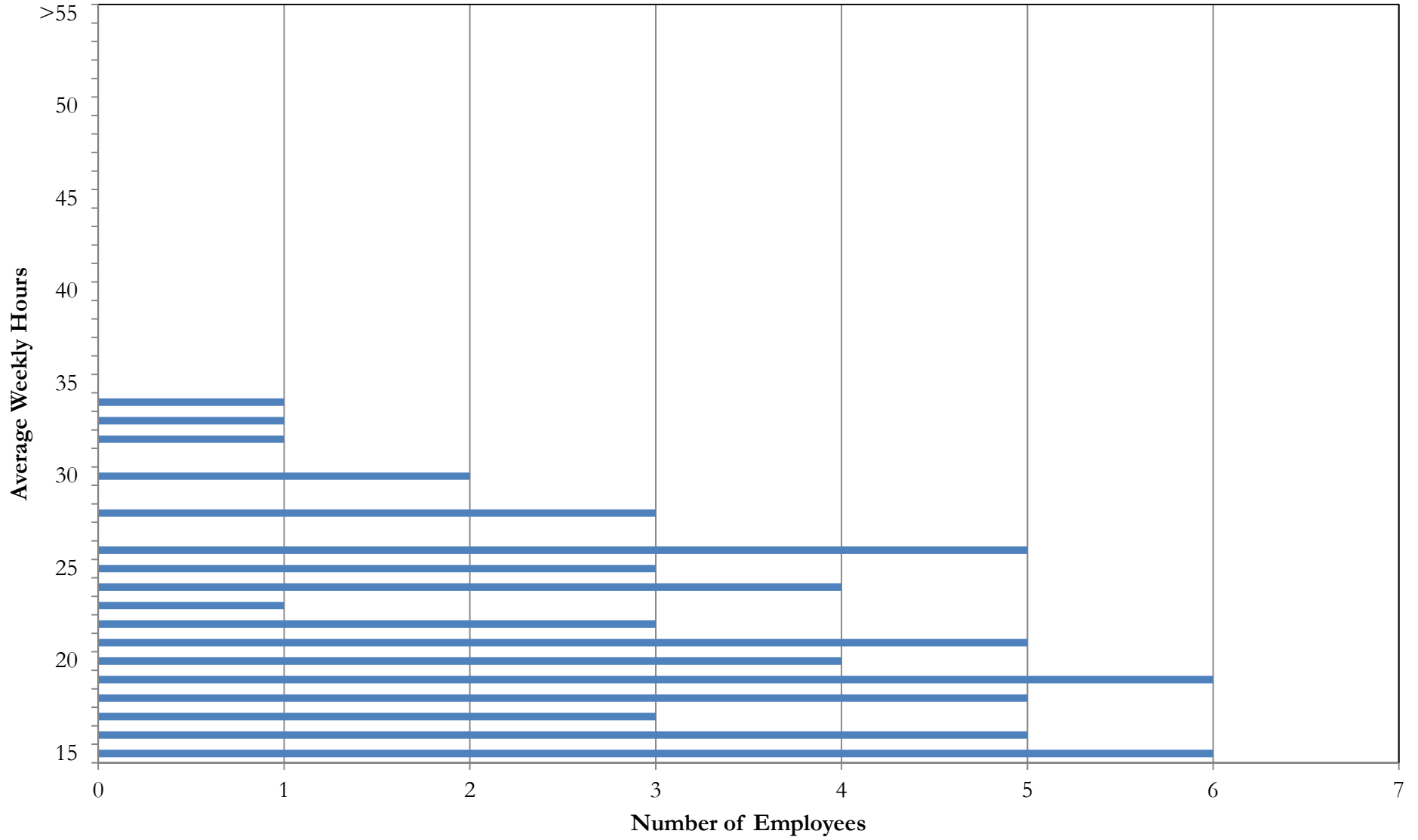
On the following pages, Table 7 shows the analysis of average weekly hours per month. Table 8 is a graphic distribution of average weekly hours by employees averaging 15 or more hours per week.

**Table 7 — Variable Hour Workforce Analysis of Average Weekly Hours Per Month
Solano Community College District**

Month	Average Wkly Hrs	12 Months Ending	Weekly Hour Distribution by Employee Counts								
			<20	20 - 24	25 - 29	30 - 34	35 - 39	40+	Total	<30	30+
Dec-14	8.9	9.4	479	29	6	8	2	1	525	514	11
Nov-14	9.3	9.5	479	25	14	11	5	-	534	518	16
Oct-14	9.8	9.5	469	26	21	12	6	3	537	516	21
Sep-14	9.5	9.4	436	16	19	14	8	4	497	471	26
Aug-14	24.3	9.4	10	1	-	6	5	2	24	11	13
Jul-14	25.3	9.2	10	1	1	14	4	2	32	12	20
Jun-14	30.1	9.0	5	-	-	8	6	3	22	5	17
May-14	27.8	8.8	4	-	-	2	2	3	11	4	7
Apr-14	9.8	8.7	461	34	12	12	8	5	532	507	25
Mar-14	8.7	8.2	469	24	13	10	3	-	519	506	13
Feb-14	8.7	7.9	473	16	11	16	7	-	523	500	23
Jan-14	7.0	7.0	376	9	4	7	2	-	398	389	9

Weekly Hour Distribution by Percentage								
<20	20 - 24	25 - 29	30 - 34	35 - 39	40+	Total	<30	30+
91.2%	5.5%	1.1%	1.5%	0.4%	0.2%	100.0%	97.9%	2.1%
89.7%	4.7%	2.6%	2.1%	0.9%	0.0%	100.0%	97.0%	3.0%
87.3%	4.8%	3.9%	2.2%	1.1%	0.6%	100.0%	96.1%	3.9%
87.7%	3.2%	3.8%	2.8%	1.6%	0.8%	100.0%	94.8%	5.2%
41.7%	4.2%	0.0%	25.0%	20.8%	8.3%	100.0%	45.8%	54.2%
31.3%	3.1%	3.1%	43.8%	12.5%	6.3%	100.0%	37.5%	62.5%
22.7%	0.0%	0.0%	36.4%	27.3%	13.6%	100.0%	22.7%	77.3%
36.4%	0.0%	0.0%	18.2%	18.2%	27.3%	100.0%	36.4%	63.6%
86.7%	6.4%	2.3%	2.3%	1.5%	0.9%	100.0%	95.3%	4.7%
90.4%	4.6%	2.5%	1.9%	0.6%	0.0%	100.0%	97.5%	2.5%
90.4%	3.1%	2.1%	3.1%	1.3%	0.0%	100.0%	95.6%	4.4%
94.5%	2.3%	1.0%	1.8%	0.5%	0.0%	100.0%	97.7%	2.3%

Table 8 — Variable Hour Workforce Distribution of Average Hours Per Week
Solano Community College District
Excludes Ongoing Employees who worked less than 15 hours per week on average and New Employees



Appendix B – Employee Detail
Solano Community College District

Ongoing Measurement Period
1/1/2014 – 12/31/2014

Count	Employee ID	Employment Classification	Active or Terminated?	Ongoing Employee or New Employee?	Currently Offered Medical Benefits?	Average Monthly Hours During Measurement Period	ACA FTE Status as of Stability Period Start Date	"Final Output" Bucket
1	60494	Non-Union	Active	Ongoing	No	45.5	ACA Non-FTE	6
2	60992	Certified	Active	Ongoing	No	18.2	ACA Non-FTE	6
3	63452	Certified	Terminated	N/A	No	0.0	ACA Non-FTE	3
4	63545	Non-Union	Active	Ongoing	No	20.8	ACA Non-FTE	6
5	63967	Non-Union	Active	Ongoing	No	7.6	ACA Non-FTE	6
6	64690	Non-Union	Active	New	No	15.3	ACA Non-FTE	10
7	64784	Classified-Union	Active	Ongoing	Yes	133.2	ACA FTE	5
8	66083	Non-Union	Terminated	N/A	No	0.0	ACA Non-FTE	3
9	66301	Certified	Active	Ongoing	No	5.5	ACA Non-FTE	6
10	66496	Non-Union	Active	New	No	58.4	ACA Non-FTE	10
11	66629	Non-Union	Active	Ongoing	No	122.3	ACA Non-FTE	6
12	67522	Certified	Active	Ongoing	No	3.6	ACA Non-FTE	6
13	67589	Non-Union	Active	Ongoing	No	26.0	ACA Non-FTE	6
14	68194	Non-Union	Active	Ongoing	No	0.1	ACA Non-FTE	6
15	69443	Certified	Active	Ongoing	No	32.9	ACA Non-FTE	6
16	69489	Non-Union	Active	New	No	108.0	ACA Non-FTE	10
17	69762	Non-Union	Active	New	No	8.1	ACA Non-FTE	8
18	70050	Certified	Active	Ongoing	No	6.8	ACA Non-FTE	6
19	70550	Certified	Active	Ongoing	No	55.0	ACA Non-FTE	6
20	71497	Certified	Active	Ongoing	No	11.9	ACA Non-FTE	6
21	71696	Non-Union	Active	New	No	12.3	ACA Non-FTE	8
22	73317	Certified	Active	Ongoing	No	7.7	ACA Non-FTE	6
23	74211	Non-Union	Active	Ongoing	No	4.0	ACA Non-FTE	6
24	74319	Non-Union	Active	Ongoing	No	0.8	ACA Non-FTE	6
25	75417	Certified	Active	Ongoing	No	39.7	ACA Non-FTE	6
26	76531	Certified	Active	Ongoing	No	4.0	ACA Non-FTE	6
27	77088	Certified	Active	Ongoing	No	28.6	ACA Non-FTE	6
28	78402	Non-Union	Active	New	No	18.9	ACA Non-FTE	10
29	78786	Non-Union	Active	Ongoing	No	9.9	ACA Non-FTE	6
30	81335	Non-Union	Active	Ongoing	No	8.0	ACA Non-FTE	6
31	82999	Non-Union	Active	Ongoing	No	16.8	ACA Non-FTE	6
32	83587	Certified	Active	New	No	20.0	ACA Non-FTE	8
33	84373	Non-Union	Active	New	No	19.1	ACA Non-FTE	10
34	84669	Non-Union	Active	Ongoing	No	20.8	ACA Non-FTE	6
35	84721	Non-Union	Active	New	No	5.1	ACA Non-FTE	10
36	85366	Certified	Active	Ongoing	No	4.6	ACA Non-FTE	6
37	86577	Classified-Union	Terminated	N/A	No	0.0	ACA Non-FTE	3
38	91188	Non-Union	Active	Ongoing	No	70.5	ACA Non-FTE	6
39	93483	Certified	Active	Ongoing	No	5.1	ACA Non-FTE	6
40	93878	Non-Union	Active	Ongoing	No	8.0	ACA Non-FTE	6

Appendix B – Employee Detail
Solano Community College District

Ongoing Measurement Period
1/1/2014 – 12/31/2014

Count	Employee ID	Employment Classification	Active or Terminated?	Ongoing Employee or New Employee?	Currently Offered Medical Benefits?	Average Monthly Hours During Measurement Period	ACA FTE Status as of Stability Period Start Date	"Final Output" Bucket
41	94030	Non-Union	Active	New	No	125.2	ACA Non-FTE	8
42	94746	Certified	Active	New	No	24.8	ACA Non-FTE	8
43	97235	Certified	Active	Ongoing	No	29.7	ACA Non-FTE	6
44	98772	Non-Union	Active	New	No	39.4	ACA Non-FTE	10
45	99712	Non-Union	Active	Ongoing	No	45.0	ACA Non-FTE	6
46	100164	Non-Union	Active	New	No	67.4	ACA Non-FTE	10
47	101636	Non-Union	Active	New	No	53.6	ACA Non-FTE	10
48	103131	Non-Union	Active	Ongoing	No	19.2	ACA Non-FTE	6
49	103955	Certified	Active	Ongoing	No	32.4	ACA Non-FTE	6
50	105158	Certified	Active	Ongoing	No	78.4	ACA Non-FTE	6
51	105364	Non-Union	Active	Ongoing	No	39.0	ACA Non-FTE	6
52	105844	Certified	Active	New	No	20.7	ACA Non-FTE	8
53	106071	Non-Union	Active	Ongoing	No	1.0	ACA Non-FTE	6
54	106076	Non-Union	Active	Ongoing	No	30.4	ACA Non-FTE	6
55	106312	Certified	Active	Ongoing	No	34.9	ACA Non-FTE	6
56	106608	Non-Union	Active	New	No	9.2	ACA Non-FTE	10
57	107538	Non-Union	Active	Ongoing	No	37.4	ACA Non-FTE	6
58	108161	Certified	Active	Ongoing	No	54.9	ACA Non-FTE	6
59	108888	Certified	Active	Ongoing	No	12.4	ACA Non-FTE	6
60	108979	Non-Union	Active	Ongoing	No	20.5	ACA Non-FTE	6
61	110033	Certified	Active	Ongoing	No	44.0	ACA Non-FTE	6
62	111530	Certified	Active	Ongoing	No	39.5	ACA Non-FTE	6
63	111834	Certified	Active	Ongoing	No	23.6	ACA Non-FTE	6
64	113232	Non-Union	Active	Ongoing	No	1.0	ACA Non-FTE	6
65	113244	Non-Union	Active	Ongoing	No	85.4	ACA Non-FTE	6
66	113626	Non-Union	Active	Ongoing	No	8.6	ACA Non-FTE	6
67	115053	Certified	Active	Ongoing	No	38.7	ACA Non-FTE	6
68	116516	Certified	Active	Ongoing	No	35.0	ACA Non-FTE	6
69	116530	Non-Union	Active	Ongoing	No	8.4	ACA Non-FTE	6
70	116746	Certified	Active	Ongoing	No	4.8	ACA Non-FTE	6
71	118144	Certified	Active	Ongoing	No	16.9	ACA Non-FTE	6
72	118831	Non-Union	Active	New	No	19.6	ACA Non-FTE	10
73	118838	Certified	Active	Ongoing	No	7.8	ACA Non-FTE	6
74	120357	Non-Union	Terminated	N/A	No	0.0	ACA Non-FTE	3
75	122848	Certified	Active	Ongoing	No	14.1	ACA Non-FTE	6
76	123281	Certified	Active	Ongoing	No	30.9	ACA Non-FTE	6
77	123367	Certified	Active	Ongoing	No	34.3	ACA Non-FTE	6
78	124192	Certified	Active	Ongoing	No	19.3	ACA Non-FTE	6
79	124738	Certified	Active	Ongoing	No	6.6	ACA Non-FTE	6
80	125771	Non-Union	Active	Ongoing	No	94.7	ACA Non-FTE	6

Appendix B – Employee Detail
Solano Community College District

Ongoing Measurement Period
1/1/2014 – 12/31/2014

Count	Employee ID	Employment Classification	Active or Terminated?	Ongoing Employee or New Employee?	Currently Offered Medical Benefits?	Average Monthly Hours During Measurement Period	ACA FTE Status as of Stability Period Start Date	"Final Output" Bucket
81	127559	Certified	Active	Ongoing	No	14.0	ACA Non-FTE	6
82	127892	Non-Union	Active	Ongoing	No	10.7	ACA Non-FTE	6
83	129302	Certified	Active	Ongoing	No	2.4	ACA Non-FTE	6
84	132686	Certified	Active	Ongoing	No	5.2	ACA Non-FTE	6
85	134066	Non-Union	Active	Ongoing	No	6.0	ACA Non-FTE	6
86	134604	Certified	Active	Ongoing	No	30.1	ACA Non-FTE	6
87	135052	Non-Union	Active	New	No	64.4	ACA Non-FTE	10
88	135352	Non-Union	Active	New	No	46.5	ACA Non-FTE	10
89	136266	Certified	Active	Ongoing	No	0.6	ACA Non-FTE	6
90	138871	Certified	Active	Ongoing	No	46.5	ACA Non-FTE	6
91	138933	Non-Union	Active	New	No	53.3	ACA Non-FTE	10
92	139495	Non-Union	Active	Ongoing	No	20.7	ACA Non-FTE	6
93	139760	Non-Union	Active	Ongoing	No	93.2	ACA Non-FTE	6
94	139969	Non-Union	Active	Ongoing	No	27.1	ACA Non-FTE	6
95	140007	Certified	Active	Ongoing	No	12.0	ACA Non-FTE	6
96	140647	Non-Union	Active	New	No	10.1	ACA Non-FTE	10
97	141679	Certified	Active	Ongoing	No	0.4	ACA Non-FTE	6
98	143449	Certified	Active	Ongoing	No	5.3	ACA Non-FTE	6
99	144199	Non-Union	Active	New	No	83.8	ACA Non-FTE	8
100	144761	Non-Union	Active	Ongoing	No	51.2	ACA Non-FTE	6
101	145906	Non-Union	Active	New	No	39.3	ACA Non-FTE	10
102	146136	Certified	Terminated	N/A	No	0.0	ACA Non-FTE	3
103	146137	Non-Union	Active	Ongoing	No	13.5	ACA Non-FTE	6
104	151190	Non-Union	Active	Ongoing	No	60.3	ACA Non-FTE	6
105	153735	Certified	Active	Ongoing	No	22.7	ACA Non-FTE	6
106	156802	Non-Union	Active	Ongoing	No	45.5	ACA Non-FTE	6
107	157475	Certified	Active	Ongoing	No	9.3	ACA Non-FTE	6
108	157917	Non-Union	Active	Ongoing	No	21.1	ACA Non-FTE	6
109	158818	Non-Union	Active	New	No	6.9	ACA Non-FTE	10
110	159168	Certified	Active	Ongoing	No	4.8	ACA Non-FTE	6
111	160252	Non-Union	Active	New	No	10.4	ACA Non-FTE	8
112	160710	Non-Union	Active	Ongoing	No	72.9	ACA Non-FTE	6
113	161454	Non-Union	Active	Ongoing	No	36.5	ACA Non-FTE	6
114	162601	Certified	Active	New	No	2.1	ACA Non-FTE	10
115	162865	Non-Union	Active	New	No	54.8	ACA Non-FTE	10
116	164596	Non-Union	Active	Ongoing	No	4.7	ACA Non-FTE	6
117	171367	Non-Union	Active	Ongoing	No	5.8	ACA Non-FTE	6
118	171633	Certified	Active	Ongoing	No	4.0	ACA Non-FTE	6
119	172759	Classified-Union	Active	Ongoing	Yes	98.3	ACA Non-FTE	6
120	173945	Certified	Active	Ongoing	No	38.0	ACA Non-FTE	6

Appendix B – Employee Detail
Solano Community College District

Ongoing Measurement Period
1/1/2014 – 12/31/2014

Count	Employee ID	Employment Classification	Active or Terminated?	Ongoing Employee or New Employee?	Currently Offered Medical Benefits?	Average Monthly Hours During Measurement Period	ACA FTE Status as of Stability Period Start Date	"Final Output" Bucket
121	175993	Non-Union	Active	New	No	73.6	ACA Non-FTE	10
122	177307	Non-Union	Active	New	No	106.1	ACA Non-FTE	8
123	177480	Certified	Active	Ongoing	No	19.0	ACA Non-FTE	6
124	177483	Certified	Active	Ongoing	No	34.8	ACA Non-FTE	6
125	178419	Non-Union	Active	Ongoing	No	0.9	ACA Non-FTE	6
126	179707	Certified	Active	Ongoing	No	29.5	ACA Non-FTE	6
127	180063	Non-Union	Active	Ongoing	No	3.0	ACA Non-FTE	6
128	180829	Certified	Active	Ongoing	No	21.4	ACA Non-FTE	6
129	180917	Non-Union	Active	New	No	35.8	ACA Non-FTE	10
130	181539	Certified	Active	Ongoing	No	15.4	ACA Non-FTE	6
131	182104	Certified	Active	New	No	48.4	ACA Non-FTE	10
132	182769	Non-Union	Active	Ongoing	No	146.1	ACA FTE	5
133	183684	Certified	Active	New	No	4.4	ACA Non-FTE	8
134	184286	Non-Union	Active	Ongoing	No	110.3	ACA Non-FTE	6
135	185069	Non-Union	Active	New	No	60.2	ACA Non-FTE	10
136	185121	Non-Union	Active	Ongoing	No	29.7	ACA Non-FTE	6
137	185970	Certified	Active	Ongoing	No	15.0	ACA Non-FTE	6
138	186395	Non-Union	Active	Ongoing	No	124.9	ACA Non-FTE	6
139	186719	Certified	Active	Ongoing	No	12.9	ACA Non-FTE	6
140	187539	Certified	Active	Ongoing	No	20.7	ACA Non-FTE	6
141	187672	Certified	Active	Ongoing	No	14.5	ACA Non-FTE	6
142	187945	Non-Union	Active	Ongoing	No	13.6	ACA Non-FTE	6
143	188873	Certified	Active	New	No	16.8	ACA Non-FTE	10
144	189293	Certified	Active	Ongoing	No	19.1	ACA Non-FTE	6
145	191361	Non-Union	Active	Ongoing	No	65.9	ACA Non-FTE	6
146	191487	Certified	Active	Ongoing	No	9.9	ACA Non-FTE	6
147	192474	Certified	Active	Ongoing	No	13.3	ACA Non-FTE	6
148	194164	Non-Union	Active	Ongoing	No	0.6	ACA Non-FTE	6
149	196599	Non-Union	Active	New	No	27.3	ACA Non-FTE	10
150	196968	Non-Union	Active	Ongoing	No	37.4	ACA Non-FTE	6
151	197462	Certified	Active	Ongoing	No	30.3	ACA Non-FTE	6
152	199119	Certified	Active	Ongoing	No	39.0	ACA Non-FTE	6
153	199905	Certified	Terminated	N/A	No	0.0	ACA Non-FTE	3
154	199998	Certified	Active	Ongoing	No	30.7	ACA Non-FTE	6
155	200063	Certified	Active	Ongoing	No	25.5	ACA Non-FTE	6
156	201170	Non-Union	Active	Ongoing	No	116.4	ACA Non-FTE	6
157	202643	Certified	Active	Ongoing	No	2.0	ACA Non-FTE	6
158	206397	Non-Union	Active	Ongoing	No	1.0	ACA Non-FTE	6
159	206837	Classified-Union	Active	Ongoing	No	88.1	ACA Non-FTE	6
160	209612	Certified	Active	Ongoing	No	26.6	ACA Non-FTE	6

Appendix B – Employee Detail
Solano Community College District

Ongoing Measurement Period
1/1/2014 – 12/31/2014

Count	Employee ID	Employment Classification	Active or Terminated?	Ongoing Employee or New Employee?	Currently Offered Medical Benefits?	Average Monthly Hours During Measurement Period	ACA FTE Status as of Stability Period Start Date	"Final Output" Bucket
161	211928	Certified	Active	Ongoing	No	4.8	ACA Non-FTE	6
162	213082	Certified	Active	Ongoing	No	9.5	ACA Non-FTE	6
163	214414	Certified	Active	Ongoing	No	9.7	ACA Non-FTE	6
164	215577	Certified	Active	Ongoing	No	21.7	ACA Non-FTE	6
165	216373	Certified	Active	Ongoing	No	30.2	ACA Non-FTE	6
166	217145	Certified	Active	Ongoing	No	9.7	ACA Non-FTE	6
167	217499	Non-Union	Active	New	No	27.2	ACA Non-FTE	10
168	218335	Non-Union	Active	New	No	6.6	ACA Non-FTE	8
169	218982	Certified	Active	Ongoing	No	9.2	ACA Non-FTE	6
170	220357	Non-Union	Active	Ongoing	No	5.0	ACA Non-FTE	6
171	220389	Certified	Active	Ongoing	No	23.8	ACA Non-FTE	6
172	220883	Certified	Active	Ongoing	No	35.9	ACA Non-FTE	6
173	221692	Non-Union	Active	Ongoing	No	44.3	ACA Non-FTE	6
174	223583	Certified	Active	Ongoing	No	34.5	ACA Non-FTE	6
175	224187	Non-Union	Active	Ongoing	No	1.8	ACA Non-FTE	6
176	224491	Non-Union	Active	Ongoing	No	65.0	ACA Non-FTE	6
177	226236	Certified	Active	Ongoing	No	20.3	ACA Non-FTE	6
178	226349	Non-Union	Active	New	No	54.9	ACA Non-FTE	10
179	226653	Non-Union	Terminated	N/A	No	35.4	ACA Non-FTE	2
180	226780	Certified	Active	Ongoing	No	39.1	ACA Non-FTE	6
181	227888	Non-Union	Active	Ongoing	No	24.6	ACA Non-FTE	6
182	227931	Non-Union	Active	Ongoing	No	89.7	ACA Non-FTE	6
183	229778	Certified	Active	Ongoing	No	0.4	ACA Non-FTE	6
184	230532	Non-Union	Active	Ongoing	No	14.4	ACA Non-FTE	6
185	230677	Certified	Active	Ongoing	No	7.2	ACA Non-FTE	6
186	230899	Non-Union	Active	Ongoing	No	83.1	ACA Non-FTE	6
187	231230	Certified	Active	New	No	16.2	ACA Non-FTE	8
188	231363	Certified	Active	Ongoing	No	24.4	ACA Non-FTE	6
189	233015	Certified	Active	New	No	45.7	ACA Non-FTE	8
190	233275	Non-Union	Active	New	No	5.0	ACA Non-FTE	10
191	235622	Non-Union	Active	Ongoing	No	0.5	ACA Non-FTE	6
192	236881	Certified	Active	Ongoing	No	1.5	ACA Non-FTE	6
193	237629	Non-Union	Active	New	No	0.0	ACA Non-FTE	10
194	238115	Non-Union	Active	New	No	59.5	ACA Non-FTE	10
195	238887	Classified-Union	Active	Ongoing	Yes	85.3	ACA Non-FTE	6
196	239715	Certified	Active	Ongoing	No	4.9	ACA Non-FTE	6
197	239944	Certified	Active	New	No	23.1	ACA Non-FTE	8
198	242799	Non-Union	Active	Ongoing	No	1.0	ACA Non-FTE	6
199	243117	Certified	Active	Ongoing	No	18.5	ACA Non-FTE	6
200	243375	Certified	Active	Ongoing	No	3.2	ACA Non-FTE	6

Appendix B – Employee Detail
Solano Community College District

Ongoing Measurement Period
1/1/2014 – 12/31/2014

Count	Employee ID	Employment Classification	Active or Terminated?	Ongoing Employee or New Employee?	Currently Offered Medical Benefits?	Average Monthly Hours During Measurement Period	ACA FTE Status as of Stability Period Start Date	"Final Output" Bucket
201	243532	Non-Union	Active	Ongoing	No	111.9	ACA Non-FTE	6
202	245657	Certified	Active	Ongoing	No	25.3	ACA Non-FTE	6
203	246178	Certified	Active	Ongoing	No	6.0	ACA Non-FTE	6
204	247141	Certified	Active	Ongoing	No	14.3	ACA Non-FTE	6
205	249113	Non-Union	Active	Ongoing	No	8.8	ACA Non-FTE	6
206	249277	Certified	Active	Ongoing	No	14.3	ACA Non-FTE	6
207	249326	Non-Union	Active	Ongoing	No	19.2	ACA Non-FTE	6
208	249902	Certified	Active	Ongoing	No	13.4	ACA Non-FTE	6
209	250410	Non-Union	Active	New	No	3.9	ACA Non-FTE	10
210	250899	Certified	Active	New	No	32.4	ACA Non-FTE	10
211	252110	Non-Union	Active	Ongoing	No	98.3	ACA Non-FTE	6
212	252311	Certified	Active	Ongoing	No	1.8	ACA Non-FTE	6
213	252530	Non-Union	Active	Ongoing	No	6.3	ACA Non-FTE	6
214	253030	Certified	Active	Ongoing	No	0.8	ACA Non-FTE	6
215	253685	Non-Union	Active	Ongoing	No	85.1	ACA Non-FTE	6
216	254867	Non-Union	Active	Ongoing	No	1.3	ACA Non-FTE	6
217	255090	Non-Union	Active	Ongoing	No	49.8	ACA Non-FTE	6
218	255178	Certified	Terminated	N/A	No	0.0	ACA Non-FTE	3
219	257253	Non-Union	Active	New	No	30.9	ACA Non-FTE	10
220	257793	Certified	Active	Ongoing	No	37.0	ACA Non-FTE	6
221	260046	Certified	Active	New	No	11.2	ACA Non-FTE	10
222	262060	Certified	Active	Ongoing	No	35.1	ACA Non-FTE	6
223	263389	Non-Union	Active	Ongoing	No	1.1	ACA Non-FTE	6
224	264529	Non-Union	Active	Ongoing	No	29.7	ACA Non-FTE	6
225	264695	Certified	Terminated	N/A	No	0.0	ACA Non-FTE	3
226	266824	Non-Union	Active	Ongoing	No	23.3	ACA Non-FTE	6
227	266947	Non-Union	Active	New	No	3.3	ACA Non-FTE	8
228	267215	Certified	Active	Ongoing	No	33.9	ACA Non-FTE	6
229	268729	Certified	Active	Ongoing	No	23.5	ACA Non-FTE	6
230	270304	Non-Union	Active	Ongoing	No	1.8	ACA Non-FTE	6
231	273050	Certified	Active	New	No	8.0	ACA Non-FTE	10
232	273887	Certified	Active	Ongoing	No	39.0	ACA Non-FTE	6
233	274908	Certified	Active	Ongoing	No	0.8	ACA Non-FTE	6
234	275092	Certified	Active	New	No	10.2	ACA Non-FTE	10
235	275960	Non-Union	Active	New	No	89.5	ACA Non-FTE	10
236	276939	Certified	Active	Ongoing	No	28.1	ACA Non-FTE	6
237	279337	Classified-Union	Active	Ongoing	Yes	149.9	ACA FTE	5
238	282059	Certified	Active	Ongoing	No	11.3	ACA Non-FTE	6
239	282117	Certified	Active	Ongoing	No	2.9	ACA Non-FTE	6
240	282256	Non-Union	Active	Ongoing	No	5.0	ACA Non-FTE	6

Appendix B – Employee Detail
Solano Community College District

Ongoing Measurement Period
1/1/2014 – 12/31/2014

Count	Employee ID	Employment Classification	Active or Terminated?	Ongoing Employee or New Employee?	Currently Offered Medical Benefits?	Average Monthly Hours During Measurement Period	ACA FTE Status as of Stability Period Start Date	"Final Output" Bucket
241	283830	Certified	Active	Ongoing	No	31.8	ACA Non-FTE	6
242	285479	Non-Union	Active	Ongoing	No	91.2	ACA Non-FTE	6
243	285880	Certified	Active	Ongoing	No	28.7	ACA Non-FTE	6
244	285889	Non-Union	Active	New	No	96.6	ACA Non-FTE	10
245	286125	Non-Union	Active	Ongoing	No	5.8	ACA Non-FTE	6
246	287040	Certified	Active	Ongoing	No	19.1	ACA Non-FTE	6
247	289025	Non-Union	Active	Ongoing	No	15.7	ACA Non-FTE	6
248	290030	Non-Union	Active	Ongoing	No	8.8	ACA Non-FTE	6
249	290749	Certified	Active	Ongoing	No	22.2	ACA Non-FTE	6
250	291778	Classified-Union	Active	Ongoing	No	113.1	ACA Non-FTE	6
251	291791	Non-Union	Active	New	No	6.3	ACA Non-FTE	10
252	293305	Certified	Active	Ongoing	No	8.5	ACA Non-FTE	6
253	295850	Certified	Active	Ongoing	No	15.9	ACA Non-FTE	6
254	296912	Non-Union	Active	Ongoing	No	111.7	ACA Non-FTE	6
255	297239	Certified	Active	Ongoing	No	28.5	ACA Non-FTE	6
256	297539	Certified	Active	Ongoing	No	49.4	ACA Non-FTE	6
257	298505	Non-Union	Active	Ongoing	No	1.0	ACA Non-FTE	6
258	300627	Non-Union	Active	Ongoing	No	18.4	ACA Non-FTE	6
259	300965	Certified	Active	Ongoing	No	6.4	ACA Non-FTE	6
260	301868	Certified	Active	Ongoing	No	19.5	ACA Non-FTE	6
261	302486	Non-Union	Active	Ongoing	No	24.4	ACA Non-FTE	6
262	302995	Certified	Active	Ongoing	No	23.5	ACA Non-FTE	6
263	303183	Certified	Active	Ongoing	No	1.7	ACA Non-FTE	6
264	304417	Non-Union	Active	New	No	4.3	ACA Non-FTE	8
265	305083	Non-Union	Active	Ongoing	No	0.9	ACA Non-FTE	6
266	306015	Certified	Active	Ongoing	No	15.0	ACA Non-FTE	6
267	308243	Non-Union	Active	New	No	26.3	ACA Non-FTE	10
268	309278	Certified	Active	Ongoing	No	29.8	ACA Non-FTE	6
269	309337	Non-Union	Active	New	No	16.2	ACA Non-FTE	10
270	310034	Non-Union	Active	Ongoing	No	13.4	ACA Non-FTE	6
271	310708	Certified	Active	Ongoing	No	51.1	ACA Non-FTE	6
272	310968	Non-Union	Active	Ongoing	No	108.3	ACA Non-FTE	6
273	311826	Non-Union	Active	Ongoing	No	71.8	ACA Non-FTE	6
274	312201	Non-Union	Active	Ongoing	No	4.8	ACA Non-FTE	6
275	313044	Certified	Active	Ongoing	No	3.6	ACA Non-FTE	6
276	314049	Non-Union	Active	New	No	37.1	ACA Non-FTE	8
277	315086	Classified-Union	Terminated	N/A	No	0.0	ACA Non-FTE	3
278	315849	Certified	Active	New	No	8.2	ACA Non-FTE	8
279	317364	Certified	Active	Ongoing	No	16.4	ACA Non-FTE	6
280	317621	Certified	Active	Ongoing	No	13.2	ACA Non-FTE	6

Appendix B – Employee Detail
Solano Community College District

Ongoing Measurement Period
1/1/2014 – 12/31/2014

Count	Employee ID	Employment Classification	Active or Terminated?	Ongoing Employee or New Employee?	Currently Offered Medical Benefits?	Average Monthly Hours During Measurement Period	ACA FTE Status as of Stability Period Start Date	"Final Output" Bucket
281	318319	Certified	Active	Ongoing	No	19.9	ACA Non-FTE	6
282	318420	Certified	Active	Ongoing	No	35.6	ACA Non-FTE	6
283	318701	Certified	Active	New	No	11.7	ACA Non-FTE	8
284	318770	Non-Union	Active	New	No	32.7	ACA Non-FTE	10
285	319917	Certified	Active	Ongoing	No	3.6	ACA Non-FTE	6
286	319921	Certified	Active	Ongoing	No	30.9	ACA Non-FTE	6
287	319990	Certified	Active	Ongoing	No	10.5	ACA Non-FTE	6
288	320032	Certified	Active	Ongoing	No	30.8	ACA Non-FTE	6
289	320051	Non-Union	Active	Ongoing	No	0.9	ACA Non-FTE	6
290	320078	Certified	Active	Ongoing	No	13.9	ACA Non-FTE	6
291	320081	Certified	Active	Ongoing	No	19.6	ACA Non-FTE	6
292	320093	Certified	Active	Ongoing	No	16.3	ACA Non-FTE	6
293	320116	Classified-Union	Active	Ongoing	No	123.5	ACA Non-FTE	6
294	320154	Certified	Active	Ongoing	No	25.2	ACA Non-FTE	6
295	320159	Certified	Active	Ongoing	No	30.8	ACA Non-FTE	6
296	320266	Certified	Active	Ongoing	No	28.4	ACA Non-FTE	6
297	320274	Certified	Active	Ongoing	No	18.5	ACA Non-FTE	6
298	320286	Non-Union	Active	Ongoing	No	8.4	ACA Non-FTE	6
299	320306	Certified	Active	Ongoing	No	4.8	ACA Non-FTE	6
300	320311	Certified	Active	Ongoing	No	16.1	ACA Non-FTE	6
301	320322	Certified	Active	Ongoing	No	35.9	ACA Non-FTE	6
302	320349	Certified	Active	Ongoing	No	8.0	ACA Non-FTE	6
303	320362	Certified	Active	Ongoing	No	42.4	ACA Non-FTE	6
304	320421	Certified	Active	Ongoing	No	29.7	ACA Non-FTE	6
305	320433	Certified	Active	Ongoing	No	27.3	ACA Non-FTE	6
306	320439	Certified	Active	Ongoing	No	20.9	ACA Non-FTE	6
307	320502	Certified	Active	Ongoing	No	9.7	ACA Non-FTE	6
308	320530	Certified	Active	Ongoing	No	8.5	ACA Non-FTE	6
309	320551	Certified	Active	Ongoing	No	32.0	ACA Non-FTE	6
310	320586	Certified	Active	Ongoing	No	19.7	ACA Non-FTE	6
311	320598	Certified	Active	Ongoing	No	17.4	ACA Non-FTE	6
312	320661	Certified	Active	Ongoing	No	23.9	ACA Non-FTE	6
313	320675	Certified	Active	Ongoing	No	31.4	ACA Non-FTE	6
314	320710	Certified	Active	Ongoing	No	14.4	ACA Non-FTE	6
315	320716	Certified	Active	Ongoing	No	2.4	ACA Non-FTE	6
316	320717	Certified	Active	Ongoing	No	18.9	ACA Non-FTE	6
317	320810	Certified	Active	Ongoing	No	23.9	ACA Non-FTE	6
318	320855	Certified	Active	Ongoing	No	33.9	ACA Non-FTE	6
319	320888	Certified	Active	Ongoing	No	25.8	ACA Non-FTE	6
320	320965	Certified	Active	Ongoing	No	16.3	ACA Non-FTE	6

Appendix B – Employee Detail
Solano Community College District

Ongoing Measurement Period
1/1/2014 – 12/31/2014

Count	Employee ID	Employment Classification	Active or Terminated?	Ongoing Employee or New Employee?	Currently Offered Medical Benefits?	Average Monthly Hours During Measurement Period	ACA FTE Status as of Stability Period Start Date	"Final Output" Bucket
321	321003	Certified	Active	Ongoing	No	24.2	ACA Non-FTE	6
322	321016	Certified	Active	Ongoing	No	22.7	ACA Non-FTE	6
323	321045	Certified	Active	Ongoing	No	31.2	ACA Non-FTE	6
324	321049	Certified	Active	Ongoing	No	27.6	ACA Non-FTE	6
325	321064	Certified	Active	Ongoing	No	21.0	ACA Non-FTE	6
326	321068	Certified	Active	Ongoing	No	34.1	ACA Non-FTE	6
327	321075	Certified	Terminated	N/A	No	0.0	ACA Non-FTE	3
328	321078	Certified	Active	Ongoing	No	6.1	ACA Non-FTE	6
329	321079	Certified	Active	Ongoing	No	22.2	ACA Non-FTE	6
330	321221	Certified	Active	Ongoing	No	29.2	ACA Non-FTE	6
331	321266	Certified	Active	Ongoing	No	11.4	ACA Non-FTE	6
332	321281	Certified	Active	Ongoing	No	14.9	ACA Non-FTE	6
333	321287	Certified	Active	Ongoing	No	13.5	ACA Non-FTE	6
334	321308	Certified	Active	Ongoing	No	22.6	ACA Non-FTE	6
335	321321	Certified	Terminated	N/A	No	2.0	ACA Non-FTE	2
336	321339	Certified	Active	Ongoing	No	73.3	ACA Non-FTE	6
337	321437	Certified	Active	Ongoing	No	19.9	ACA Non-FTE	6
338	321464	Certified	Active	Ongoing	No	32.6	ACA Non-FTE	6
339	321473	Certified	Terminated	N/A	No	0.0	ACA Non-FTE	3
340	321506	Certified	Active	Ongoing	No	13.3	ACA Non-FTE	6
341	321538	Certified	Terminated	N/A	No	0.0	ACA Non-FTE	3
342	321564	Certified	Active	Ongoing	No	4.8	ACA Non-FTE	6
343	321570	Certified	Active	Ongoing	No	33.6	ACA Non-FTE	6
344	321571	Certified	Active	Ongoing	No	21.7	ACA Non-FTE	6
345	321577	Certified	Active	Ongoing	No	23.1	ACA Non-FTE	6
346	321595	Certified	Active	Ongoing	No	31.7	ACA Non-FTE	6
347	321598	Certified	Active	Ongoing	No	23.9	ACA Non-FTE	6
348	321606	Certified	Active	Ongoing	No	26.0	ACA Non-FTE	6
349	321618	Certified	Active	New	No	9.9	ACA Non-FTE	10
350	321648	Certified	Active	Ongoing	No	38.3	ACA Non-FTE	6
351	321650	Certified	Active	Ongoing	No	27.6	ACA Non-FTE	6
352	321653	Certified	Active	Ongoing	No	20.6	ACA Non-FTE	6
353	321716	Certified	Active	Ongoing	No	20.5	ACA Non-FTE	6
354	321731	Certified	Active	Ongoing	No	1.5	ACA Non-FTE	6
355	321768	Certified	Active	Ongoing	No	13.3	ACA Non-FTE	6
356	321776	Certified	Active	Ongoing	No	14.9	ACA Non-FTE	6
357	321877	Certified	Active	Ongoing	No	43.1	ACA Non-FTE	6
358	321908	Certified	Active	Ongoing	No	35.4	ACA Non-FTE	6
359	322579	Certified	Active	Ongoing	No	20.2	ACA Non-FTE	6
360	322817	Certified	Active	Ongoing	No	31.0	ACA Non-FTE	6

Appendix B – Employee Detail
Solano Community College District

Ongoing Measurement Period
1/1/2014 – 12/31/2014

Count	Employee ID	Employment Classification	Active or Terminated?	Ongoing Employee or New Employee?	Currently Offered Medical Benefits?	Average Monthly Hours During Measurement Period	ACA FTE Status as of Stability Period Start Date	"Final Output" Bucket
361	324182	Certified	Active	Ongoing	No	24.1	ACA Non-FTE	6
362	326305	Certified	Active	Ongoing	No	11.1	ACA Non-FTE	6
363	326759	Certified	Active	Ongoing	No	105.7	ACA Non-FTE	6
364	326837	Certified	Active	Ongoing	No	88.9	ACA Non-FTE	6
365	327328	Certified	Active	Ongoing	No	25.1	ACA Non-FTE	6
366	327573	Non-Union	Active	Ongoing	No	29.5	ACA Non-FTE	6
367	328116	Certified	Active	Ongoing	No	7.2	ACA Non-FTE	6
368	329088	Non-Union	Active	Ongoing	No	5.4	ACA Non-FTE	6
369	329166	Non-Union	Active	Ongoing	No	64.3	ACA Non-FTE	6
370	331207	Non-Union	Active	New	No	7.6	ACA Non-FTE	8
371	332240	Certified	Active	Ongoing	No	19.3	ACA Non-FTE	6
372	332243	Certified	Active	Ongoing	No	32.0	ACA Non-FTE	6
373	332431	Non-Union	Active	New	No	19.9	ACA Non-FTE	10
374	333308	Certified	Active	Ongoing	No	21.2	ACA Non-FTE	6
375	333707	Non-Union	Active	New	No	144.2	ACA Non-FTE	9
376	335206	Non-Union	Active	Ongoing	No	32.8	ACA Non-FTE	6
377	335610	Non-Union	Active	New	No	86.0	ACA Non-FTE	10
378	335985	Non-Union	Active	Ongoing	No	17.9	ACA Non-FTE	6
379	336318	Non-Union	Active	Ongoing	No	98.6	ACA Non-FTE	6
380	341035	Non-Union	Active	Ongoing	No	78.4	ACA Non-FTE	6
381	341043	Certified	Active	Ongoing	No	21.9	ACA Non-FTE	6
382	341162	Certified	Active	Ongoing	No	24.8	ACA Non-FTE	6
383	341163	Certified	Active	Ongoing	No	19.8	ACA Non-FTE	6
384	341489	Certified	Active	Ongoing	No	24.8	ACA Non-FTE	6
385	342315	Certified	Active	Ongoing	No	4.8	ACA Non-FTE	6
386	343109	Certified	Active	Ongoing	No	4.3	ACA Non-FTE	6
387	343330	Non-Union	Active	Ongoing	No	6.3	ACA Non-FTE	6
388	344595	Certified	Active	Ongoing	No	23.2	ACA Non-FTE	6
389	345480	Non-Union	Active	New	No	2.7	ACA Non-FTE	10
390	346583	Certified	Active	Ongoing	No	9.2	ACA Non-FTE	6
391	347174	Non-Union	Active	Ongoing	No	57.7	ACA Non-FTE	6
392	348693	Certified	Active	New	No	27.2	ACA Non-FTE	10
393	348964	Certified	Active	Ongoing	No	26.6	ACA Non-FTE	6
394	351236	Certified	Active	Ongoing	No	33.0	ACA Non-FTE	6
395	351237	Certified	Active	Ongoing	No	32.4	ACA Non-FTE	6
396	351666	Certified	Active	Ongoing	No	12.1	ACA Non-FTE	6
397	352746	Non-Union	Active	New	No	3.8	ACA Non-FTE	10
398	353406	Non-Union	Active	Ongoing	No	55.9	ACA Non-FTE	6
399	353477	Certified	Active	Ongoing	No	26.7	ACA Non-FTE	6
400	101000573	Non-Union	Active	Ongoing	No	30.5	ACA Non-FTE	6

Appendix B – Employee Detail
Solano Community College District

Ongoing Measurement Period
1/1/2014 – 12/31/2014

Count	Employee ID	Employment Classification	Active or Terminated?	Ongoing Employee or New Employee?	Currently Offered Medical Benefits?	Average Monthly Hours During Measurement Period	ACA FTE Status as of Stability Period Start Date	"Final Output" Bucket
401	101000647	Non-Union	Active	Ongoing	No	1.7	ACA Non-FTE	6
402	101002650	Non-Union	Active	Ongoing	No	87.4	ACA Non-FTE	6
403	101002733	Non-Union	Active	Ongoing	No	15.9	ACA Non-FTE	6
404	101003176	Non-Union	Active	New	No	64.9	ACA Non-FTE	10
405	101003508	Non-Union	Active	Ongoing	No	56.6	ACA Non-FTE	6
406	101004436	Non-Union	Active	Ongoing	No	10.6	ACA Non-FTE	6
407	101004442	Non-Union	Active	Ongoing	No	58.4	ACA Non-FTE	6
408	101004494	Non-Union	Active	Ongoing	No	23.2	ACA Non-FTE	6
409	101010319	Non-Union	Active	Ongoing	No	114.1	ACA Non-FTE	6
410	101010360	Non-Union	Active	New	No	22.4	ACA Non-FTE	10
411	101016495	Non-Union	Active	Ongoing	No	17.6	ACA Non-FTE	6
412	101017512	Non-Union	Active	Ongoing	No	35.9	ACA Non-FTE	6
413	101022056	Non-Union	Active	Ongoing	No	68.9	ACA Non-FTE	6
414	101022275	Non-Union	Active	Ongoing	No	4.1	ACA Non-FTE	6
415	101023278	Non-Union	Active	New	No	15.1	ACA Non-FTE	8
416	101026512	Non-Union	Active	New	No	73.9	ACA Non-FTE	10
417	101027857	Non-Union	Active	New	No	4.7	ACA Non-FTE	10
418	101029333	Non-Union	Active	New	No	38.9	ACA Non-FTE	10
419	101032044	Non-Union	Active	Ongoing	No	103.7	ACA Non-FTE	6
420	101033795	Certified	Active	New	No	1.1	ACA Non-FTE	8
421	101037179	Non-Union	Active	Ongoing	No	15.1	ACA Non-FTE	6
422	101038769	Non-Union	Active	New	No	10.5	ACA Non-FTE	10
423	101047762	Certified	Active	Ongoing	No	34.1	ACA Non-FTE	6
424	101051453	Non-Union	Active	Ongoing	No	50.2	ACA Non-FTE	6
425	101052765	Certified	Active	Ongoing	No	38.2	ACA Non-FTE	6
426	101055681	Certified	Active	Ongoing	No	15.0	ACA Non-FTE	6
427	101055791	Certified	Active	Ongoing	No	7.2	ACA Non-FTE	6
428	101056924	Certified	Active	Ongoing	No	18.0	ACA Non-FTE	6
429	101072167	Certified	Active	Ongoing	No	6.5	ACA Non-FTE	6
430	101079299	Non-Union	Active	Ongoing	No	0.6	ACA Non-FTE	6
431	101084008	Non-Union	Active	Ongoing	No	0.8	ACA Non-FTE	6
432	101123456	Non-Union	Active	Ongoing	No	7.8	ACA Non-FTE	6
433	101123582	Certified	Active	Ongoing	No	24.2	ACA Non-FTE	6
434	101123757	Certified	Active	Ongoing	No	49.5	ACA Non-FTE	6
435	101123768	Certified	Active	Ongoing	No	58.5	ACA Non-FTE	6
436	101160406	Certified	Terminated	N/A	No	26.5	ACA Non-FTE	2
437	101161785	Non-Union	Active	Ongoing	No	20.4	ACA Non-FTE	6
438	101173583	Non-Union	Active	Ongoing	No	16.9	ACA Non-FTE	6
439	101177304	Certified	Active	Ongoing	No	14.4	ACA Non-FTE	6
440	101182183	Non-Union	Active	Ongoing	No	9.4	ACA Non-FTE	6

Appendix B – Employee Detail
Solano Community College District

Ongoing Measurement Period
1/1/2014 – 12/31/2014

Count	Employee ID	Employment Classification	Active or Terminated?	Ongoing Employee or New Employee?	Currently Offered Medical Benefits?	Average Monthly Hours During Measurement Period	ACA FTE Status as of Stability Period Start Date	"Final Output" Bucket
441	101205071	Non-Union	Active	New	No	22.5	ACA Non-FTE	10
442	101225953	Non-Union	Active	Ongoing	No	7.5	ACA Non-FTE	6
443	101245890	Non-Union	Active	New	No	87.2	ACA Non-FTE	10
444	101246008	Non-Union	Active	Ongoing	No	67.1	ACA Non-FTE	6
445	101362837	Non-Union	Active	New	No	52.8	ACA Non-FTE	8
446	101363848	Non-Union	Active	New	No	101.3	ACA Non-FTE	8
447	101365179	Certified	Active	New	No	16.3	ACA Non-FTE	10
448	101365305	Non-Union	Active	Ongoing	No	16.2	ACA Non-FTE	6
449	101365349	Certified	Active	New	No	17.2	ACA Non-FTE	10
450	101365780	Non-Union	Active	New	No	27.0	ACA Non-FTE	10
451	101366294	Non-Union	Active	Ongoing	No	21.3	ACA Non-FTE	6
452	101368348	Non-Union	Active	Ongoing	No	22.3	ACA Non-FTE	6
453	101369031	Non-Union	Active	New	No	44.2	ACA Non-FTE	10
454	101369081	Non-Union	Active	New	No	83.5	ACA Non-FTE	10
455	101369883	Non-Union	Active	Ongoing	No	19.7	ACA Non-FTE	6
456	101369897	Non-Union	Active	New	No	19.0	ACA Non-FTE	8
457	101370171	Non-Union	Active	New	No	63.1	ACA Non-FTE	8
458	101370591	Non-Union	Active	New	No	16.0	ACA Non-FTE	10
459	101372698	Non-Union	Active	New	No	100.0	ACA Non-FTE	10
460	101373003	Non-Union	Active	Ongoing	No	16.9	ACA Non-FTE	6
461	101375019	Non-Union	Active	New	No	23.1	ACA Non-FTE	8
462	101375383	Certified	Active	Ongoing	No	9.7	ACA Non-FTE	6
463	101375920	Non-Union	Active	Ongoing	No	15.7	ACA Non-FTE	6
464	101377482	Non-Union	Active	Ongoing	No	18.4	ACA Non-FTE	6
465	101377647	Non-Union	Active	Ongoing	No	39.1	ACA Non-FTE	6
466	101378153	Non-Union	Active	Ongoing	No	13.2	ACA Non-FTE	6
467	101382695	Non-Union	Active	New	No	15.5	ACA Non-FTE	10
468	101385440	Non-Union	Active	Ongoing	No	64.1	ACA Non-FTE	6
469	101389558	Non-Union	Active	New	No	88.7	ACA Non-FTE	10
470	101390035	Non-Union	Active	New	No	108.6	ACA Non-FTE	10
471	101390227	Certified	Active	Ongoing	No	26.1	ACA Non-FTE	6
472	101392106	Non-Union	Active	New	No	29.9	ACA Non-FTE	8
473	101393967	Non-Union	Active	Ongoing	No	29.0	ACA Non-FTE	6
474	101394260	Non-Union	Active	New	No	34.5	ACA Non-FTE	10
475	101395801	Certified	Active	Ongoing	No	45.8	ACA Non-FTE	6
476	101395810	Certified	Active	Ongoing	No	11.7	ACA Non-FTE	6
477	101422473	Certified	Active	Ongoing	No	14.8	ACA Non-FTE	6
478	101424517	Certified	Active	Ongoing	No	35.5	ACA Non-FTE	6
479	101430185	Certified	Active	Ongoing	No	27.3	ACA Non-FTE	6
480	101431406	Certified	Active	Ongoing	No	28.6	ACA Non-FTE	6

Appendix B – Employee Detail
Solano Community College District

Ongoing Measurement Period
1/1/2014 – 12/31/2014

Count	Employee ID	Employment Classification	Active or Terminated?	Ongoing Employee or New Employee?	Currently Offered Medical Benefits?	Average Monthly Hours During Measurement Period	ACA FTE Status as of Stability Period Start Date	"Final Output" Bucket
481	101436027	Non-Union	Active	Ongoing	No	10.0	ACA Non-FTE	6
482	101436667	Non-Union	Active	Ongoing	No	12.9	ACA Non-FTE	6
483	101437199	Non-Union	Active	Ongoing	No	17.4	ACA Non-FTE	6
484	101442346	Non-Union	Active	Ongoing	No	17.5	ACA Non-FTE	6
485	101444751	Non-Union	Active	Ongoing	No	50.5	ACA Non-FTE	6
486	101445028	Classified-Union	Active	Ongoing	No	73.9	ACA Non-FTE	6
487	101449219	Certified	Active	Ongoing	No	4.6	ACA Non-FTE	6
488	101457642	Certified	Active	Ongoing	No	25.3	ACA Non-FTE	6
489	101458088	Non-Union	Active	Ongoing	No	93.0	ACA Non-FTE	6
490	101458877	Classified-Union	Active	Ongoing	Yes	139.7	ACA FTE	5
491	101461574	Certified	Active	Ongoing	No	6.9	ACA Non-FTE	6
492	101462938	Non-Union	Active	Ongoing	No	46.8	ACA Non-FTE	6
493	101464109	Non-Union	Active	New	No	12.1	ACA Non-FTE	10
494	101464266	Non-Union	Active	New	No	4.3	ACA Non-FTE	10
495	101466283	Non-Union	Active	Ongoing	No	16.8	ACA Non-FTE	6
496	101486226	Certified	Active	Ongoing	No	19.6	ACA Non-FTE	6
497	101494075	Non-Union	Active	Ongoing	No	48.5	ACA Non-FTE	6
498	101494082	Non-Union	Active	Ongoing	No	60.7	ACA Non-FTE	6
499	101496024	Non-Union	Active	New	No	58.3	ACA Non-FTE	10
500	101520778	Non-Union	Active	Ongoing	No	40.5	ACA Non-FTE	6
501	101522943	Non-Union	Active	New	No	39.4	ACA Non-FTE	10
502	101523086	Non-Union	Active	Ongoing	No	10.4	ACA Non-FTE	6
503	101537584	Non-Union	Active	Ongoing	No	11.6	ACA Non-FTE	6
504	101543672	Certified	Active	Ongoing	No	11.6	ACA Non-FTE	6
505	101553114	Non-Union	Active	New	No	15.7	ACA Non-FTE	8
506	101553289	Non-Union	Active	Ongoing	No	14.6	ACA Non-FTE	6
507	101557501	Non-Union	Active	New	No	37.7	ACA Non-FTE	10
508	101574092	Non-Union	Active	Ongoing	No	0.6	ACA Non-FTE	6
509	101574428	Non-Union	Active	New	No	28.7	ACA Non-FTE	10
510	101577304	Non-Union	Active	Ongoing	No	45.8	ACA Non-FTE	6
511	101577374	Non-Union	Active	Ongoing	No	2.5	ACA Non-FTE	6
512	101577454	Non-Union	Active	New	No	26.5	ACA Non-FTE	8
513	101578232	Non-Union	Active	Ongoing	No	2.1	ACA Non-FTE	6
514	101578277	Non-Union	Active	Ongoing	No	19.0	ACA Non-FTE	6
515	101578807	Non-Union	Active	Ongoing	No	35.9	ACA Non-FTE	6
516	101579092	Non-Union	Active	New	No	9.9	ACA Non-FTE	8
517	101579962	Non-Union	Active	Ongoing	No	107.3	ACA Non-FTE	6
518	101579999	Non-Union	Active	Ongoing	No	16.7	ACA Non-FTE	6
519	101580100	Non-Union	Active	New	No	4.7	ACA Non-FTE	8
520	101580642	Non-Union	Active	Ongoing	No	17.3	ACA Non-FTE	6

Appendix B – Employee Detail
Solano Community College District

Ongoing Measurement Period
1/1/2014 – 12/31/2014

Count	Employee ID	Employment Classification	Active or Terminated?	Ongoing Employee or New Employee?	Currently Offered Medical Benefits?	Average Monthly Hours During Measurement Period	ACA FTE Status as of Stability Period Start Date	"Final Output" Bucket
521	101581432	Non-Union	Active	New	No	18.0	ACA Non-FTE	8
522	101581721	Non-Union	Active	Ongoing	No	1.0	ACA Non-FTE	6
523	101582138	Non-Union	Active	Ongoing	No	14.8	ACA Non-FTE	6
524	101582420	Non-Union	Active	New	No	55.3	ACA Non-FTE	8
525	101582687	Non-Union	Active	Ongoing	No	114.5	ACA Non-FTE	6
526	101584294	Non-Union	Active	Ongoing	No	26.0	ACA Non-FTE	6
527	101585123	Certified	Active	Ongoing	No	6.5	ACA Non-FTE	6
528	101588532	Certified	Active	Ongoing	No	6.5	ACA Non-FTE	6
529	101589783	Non-Union	Active	Ongoing	No	5.8	ACA Non-FTE	6
530	101590079	Non-Union	Active	Ongoing	No	79.1	ACA Non-FTE	6
531	101590925	Certified	Active	Ongoing	No	53.7	ACA Non-FTE	6
532	101590927	Certified	Active	Ongoing	No	6.7	ACA Non-FTE	6
533	101591734	Certified	Active	Ongoing	No	23.0	ACA Non-FTE	6
534	101592148	Non-Union	Active	Ongoing	No	65.6	ACA Non-FTE	6
535	101592234	Non-Union	Active	Ongoing	No	30.7	ACA Non-FTE	6
536	101592244	Certified	Active	Ongoing	No	27.5	ACA Non-FTE	6
537	101592255	Certified	Active	Ongoing	No	17.7	ACA Non-FTE	6
538	101592583	Certified	Active	Ongoing	No	38.5	ACA Non-FTE	6
539	101593664	Non-Union	Active	Ongoing	No	4.3	ACA Non-FTE	6
540	101596736	Certified	Active	Ongoing	No	3.6	ACA Non-FTE	6
541	101597097	Certified	Active	Ongoing	No	13.0	ACA Non-FTE	6
542	101598498	Non-Union	Active	Ongoing	No	37.9	ACA Non-FTE	6
543	101603410	Non-Union	Active	New	No	17.4	ACA Non-FTE	10
544	101604300	Non-Union	Active	New	No	27.8	ACA Non-FTE	10
545	101604404	Non-Union	Active	Ongoing	No	6.6	ACA Non-FTE	6
546	101605969	Non-Union	Active	Ongoing	No	17.9	ACA Non-FTE	6
547	101606338	Non-Union	Active	Ongoing	No	76.6	ACA Non-FTE	6
548	101606348	Non-Union	Active	New	No	24.1	ACA Non-FTE	8
549	101606436	Certified	Active	Ongoing	No	1.2	ACA Non-FTE	6
550	101606665	Non-Union	Active	Ongoing	No	19.6	ACA Non-FTE	6
551	101606690	Non-Union	Active	Ongoing	No	21.2	ACA Non-FTE	6
552	101606844	Non-Union	Active	Ongoing	No	25.3	ACA Non-FTE	6
553	101607012	Certified	Active	Ongoing	No	14.4	ACA Non-FTE	6
554	101608714	Certified	Active	New	No	30.0	ACA Non-FTE	10
555	101610698	Non-Union	Active	Ongoing	No	25.3	ACA Non-FTE	6
556	101610900	Non-Union	Active	Ongoing	No	0.8	ACA Non-FTE	6
557	101611404	Non-Union	Active	Ongoing	No	6.3	ACA Non-FTE	6
558	101612559	Non-Union	Active	Ongoing	No	1.3	ACA Non-FTE	6
559	101612752	Non-Union	Active	Ongoing	No	1.0	ACA Non-FTE	6
560	101613429	Non-Union	Terminated	N/A	No	25.4	ACA Non-FTE	2

Appendix B – Employee Detail
Solano Community College District

Ongoing Measurement Period
1/1/2014 – 12/31/2014

Count	Employee ID	Employment Classification	Active or Terminated?	Ongoing Employee or New Employee?	Currently Offered Medical Benefits?	Average Monthly Hours During Measurement Period	ACA FTE Status as of Stability Period Start Date	"Final Output" Bucket
561	101614201	Non-Union	Active	Ongoing	No	36.8	ACA Non-FTE	6
562	101615646	Non-Union	Active	New	No	9.6	ACA Non-FTE	10
563	101622769	Non-Union	Active	Ongoing	No	71.3	ACA Non-FTE	6
564	101622783	Non-Union	Active	New	No	38.2	ACA Non-FTE	10
565	101622868	Non-Union	Active	Ongoing	No	5.5	ACA Non-FTE	6
566	101622972	Non-Union	Active	Ongoing	No	12.9	ACA Non-FTE	6
567	101624270	Non-Union	Active	Ongoing	No	16.3	ACA Non-FTE	6
568	101625582	Non-Union	Active	New	No	10.4	ACA Non-FTE	10
569	101636558	Non-Union	Active	Ongoing	No	21.5	ACA Non-FTE	6
570	101637075	Non-Union	Active	Ongoing	No	84.6	ACA Non-FTE	6
571	101637397	Non-Union	Active	Ongoing	No	7.1	ACA Non-FTE	6
572	101637486	Non-Union	Active	Ongoing	No	12.6	ACA Non-FTE	6
573	101638281	Non-Union	Active	New	No	2.7	ACA Non-FTE	8
574	101638450	Non-Union	Active	Ongoing	No	2.3	ACA Non-FTE	6
575	101638628	Non-Union	Active	Ongoing	No	17.4	ACA Non-FTE	6
576	101641163	Certified	Active	Ongoing	No	1.8	ACA Non-FTE	6
577	101641430	Non-Union	Active	New	No	16.1	ACA Non-FTE	8
578	101655578	Non-Union	Active	Ongoing	No	24.3	ACA Non-FTE	6
579	101657946	Non-Union	Active	New	No	16.7	ACA Non-FTE	10
580	101667021	Non-Union	Active	New	No	44.5	ACA Non-FTE	10
581	101667703	Non-Union	Active	Ongoing	No	14.3	ACA Non-FTE	6
582	101668581	Certified	Active	New	No	11.6	ACA Non-FTE	10
583	101674138	Non-Union	Active	New	No	95.7	ACA Non-FTE	10
584	101674649	Non-Union	Active	Ongoing	No	81.3	ACA Non-FTE	6
585	101681030	Non-Union	Active	Ongoing	No	46.5	ACA Non-FTE	6
586	101681065	Non-Union	Active	Ongoing	No	2.6	ACA Non-FTE	6
587	101682142	Non-Union	Active	Ongoing	No	50.6	ACA Non-FTE	6
588	101689077	Non-Union	Active	New	No	62.4	ACA Non-FTE	10
589	101689358	Non-Union	Active	New	No	45.6	ACA Non-FTE	8
590	101689668	Non-Union	Active	New	No	74.5	ACA Non-FTE	10
591	101689952	Non-Union	Active	Ongoing	No	42.8	ACA Non-FTE	6
592	101689968	Non-Union	Active	New	No	51.8	ACA Non-FTE	8
593	101689972	Non-Union	Active	New	No	1.5	ACA Non-FTE	8
594	101689996	Non-Union	Active	Ongoing	No	33.3	ACA Non-FTE	6
595	101690059	Non-Union	Active	New	No	3.7	ACA Non-FTE	8
596	101690069	Non-Union	Active	Ongoing	No	11.2	ACA Non-FTE	6
597	101690098	Non-Union	Active	Ongoing	No	3.9	ACA Non-FTE	6
598	101690600	Non-Union	Active	Ongoing	No	84.9	ACA Non-FTE	6
599	101690646	Non-Union	Active	Ongoing	No	30.9	ACA Non-FTE	6
600	101690657	Non-Union	Active	Ongoing	No	16.9	ACA Non-FTE	6

Appendix B – Employee Detail
Solano Community College District

Ongoing Measurement Period
1/1/2014 – 12/31/2014

Count	Employee ID	Employment Classification	Active or Terminated?	Ongoing Employee or New Employee?	Currently Offered Medical Benefits?	Average Monthly Hours During Measurement Period	ACA FTE Status as of Stability Period Start Date	"Final Output" Bucket
601	101690662	Non-Union	Active	Ongoing	No	6.9	ACA Non-FTE	6
602	101691461	Non-Union	Active	Ongoing	No	23.9	ACA Non-FTE	6
603	101691652	Non-Union	Active	Ongoing	No	38.0	ACA Non-FTE	6
604	101691971	Non-Union	Active	Ongoing	No	27.0	ACA Non-FTE	6
605	101693904	Non-Union	Active	New	No	50.0	ACA Non-FTE	10
606	101695902	Non-Union	Active	Ongoing	No	9.8	ACA Non-FTE	6
607	101696506	Non-Union	Active	New	No	12.9	ACA Non-FTE	10
608	101696675	Non-Union	Active	Ongoing	No	0.8	ACA Non-FTE	6
609	101696752	Non-Union	Active	New	No	93.3	ACA Non-FTE	8
610	101697237	Non-Union	Active	Ongoing	No	1.3	ACA Non-FTE	6
611	101697555	Non-Union	Active	New	No	46.9	ACA Non-FTE	10
612	101697748	Non-Union	Active	Ongoing	No	56.4	ACA Non-FTE	6
613	101699281	Certified	Active	Ongoing	No	9.6	ACA Non-FTE	6
614	101700942	Non-Union	Active	New	No	4.0	ACA Non-FTE	10
615	101701100	Certified	Active	Ongoing	No	9.7	ACA Non-FTE	6
616	101702337	Certified	Active	New	No	37.8	ACA Non-FTE	10
617	101702820	Non-Union	Active	New	No	15.8	ACA Non-FTE	10
618	101702907	Non-Union	Active	New	No	61.5	ACA Non-FTE	10
619	101702918	Non-Union	Active	New	No	45.9	ACA Non-FTE	10
620	101703126	Non-Union	Active	Ongoing	No	24.9	ACA Non-FTE	6
621	101703187	Non-Union	Active	New	No	41.0	ACA Non-FTE	10
622	101703503	Non-Union	Active	Ongoing	No	38.8	ACA Non-FTE	6
623	101703558	Non-Union	Active	Ongoing	No	22.4	ACA Non-FTE	6
624	101703581	Certified	Active	Ongoing	No	7.2	ACA Non-FTE	6
625	101704460	Non-Union	Active	Ongoing	No	16.0	ACA Non-FTE	6
626	101704542	Non-Union	Active	Ongoing	No	40.0	ACA Non-FTE	6
627	101704604	Non-Union	Active	New	No	20.9	ACA Non-FTE	10
628	101705167	Non-Union	Active	New	No	14.8	ACA Non-FTE	10
629	101706952	Non-Union	Active	New	No	29.1	ACA Non-FTE	10
630	101706989	Non-Union	Active	Ongoing	No	133.5	ACA FTE	5
631	101707046	Non-Union	Active	New	No	53.4	ACA Non-FTE	10
632	101707441	Non-Union	Active	Ongoing	No	31.3	ACA Non-FTE	6
633	101708285	Non-Union	Active	Ongoing	No	3.8	ACA Non-FTE	6
634	101709492	Non-Union	Active	New	No	2.6	ACA Non-FTE	10
635	101709524	Non-Union	Active	Ongoing	No	55.9	ACA Non-FTE	6
636	101709833	Non-Union	Active	New	No	3.8	ACA Non-FTE	8
637	101711630	Non-Union	Active	New	No	0.5	ACA Non-FTE	10
638	101712449	Certified	Active	Ongoing	No	3.6	ACA Non-FTE	6
639	101715703	Non-Union	Active	Ongoing	No	39.4	ACA Non-FTE	6
640	101717444	Non-Union	Active	New	No	34.3	ACA Non-FTE	10

Appendix B – Employee Detail
Solano Community College District

Ongoing Measurement Period
1/1/2014 – 12/31/2014

Count	Employee ID	Employment Classification	Active or Terminated?	Ongoing Employee or New Employee?	Currently Offered Medical Benefits?	Average Monthly Hours During Measurement Period	ACA FTE Status as of Stability Period Start Date	"Final Output" Bucket
641	101718047	Certified	Active	Ongoing	No	1.5	ACA Non-FTE	6
642	101719271	Non-Union	Active	Ongoing	No	106.2	ACA Non-FTE	6
643	101721806	Certified	Active	Ongoing	No	7.4	ACA Non-FTE	6
644	101721811	Certified	Active	Ongoing	No	7.6	ACA Non-FTE	6
645	101722209	Certified	Active	Ongoing	No	1.2	ACA Non-FTE	6
646	101722220	Non-Union	Active	Ongoing	No	30.0	ACA Non-FTE	6
647	101722322	Non-Union	Active	Ongoing	No	24.5	ACA Non-FTE	6
648	101722701	Certified	Active	Ongoing	No	20.3	ACA Non-FTE	6
649	101722817	Non-Union	Active	New	No	2.5	ACA Non-FTE	10
650	101723431	Certified	Active	Ongoing	No	31.3	ACA Non-FTE	6
651	101723472	Certified	Active	Ongoing	No	15.3	ACA Non-FTE	6
652	101723474	Certified	Active	Ongoing	No	29.3	ACA Non-FTE	6
653	101723476	Certified	Active	Ongoing	No	3.6	ACA Non-FTE	6
654	101723482	Certified	Active	Ongoing	No	57.4	ACA Non-FTE	6
655	101723747	Certified	Active	Ongoing	No	36.6	ACA Non-FTE	6
656	101724108	Certified	Active	Ongoing	No	4.8	ACA Non-FTE	6
657	101724216	Certified	Active	Ongoing	No	34.6	ACA Non-FTE	6
658	101724220	Non-Union	Active	New	No	0.0	ACA Non-FTE	10
659	101724294	Certified	Active	Ongoing	No	11.6	ACA Non-FTE	6
660	101724309	Non-Union	Active	New	No	15.7	ACA Non-FTE	8
661	101725027	Certified	Active	Ongoing	No	19.7	ACA Non-FTE	6
662	101725049	Certified	Active	New	No	21.2	ACA Non-FTE	10
663	101725949	Certified	Active	Ongoing	No	21.0	ACA Non-FTE	6
664	101731039	Non-Union	Active	Ongoing	No	14.8	ACA Non-FTE	6
665	101739400	Non-Union	Active	Ongoing	No	47.3	ACA Non-FTE	6
666	101767531	Non-Union	Active	New	No	34.4	ACA Non-FTE	8
667	101768821	Non-Union	Active	New	No	20.0	ACA Non-FTE	8
668	101779298	Non-Union	Active	Ongoing	No	82.1	ACA Non-FTE	6
669	101799047	Non-Union	Active	New	No	5.0	ACA Non-FTE	10
670	101803342	Non-Union	Active	New	No	8.0	ACA Non-FTE	10
671	101805796	Certified	Active	Ongoing	No	7.2	ACA Non-FTE	6
672	101806179	Non-Union	Active	New	No	11.8	ACA Non-FTE	10
673	101806939	Certified	Active	Ongoing	No	20.0	ACA Non-FTE	6
674	101807008	Certified	Active	Ongoing	No	19.7	ACA Non-FTE	6
675	101807540	Certified	Active	Ongoing	No	24.5	ACA Non-FTE	6
676	101807652	Certified	Active	Ongoing	No	21.4	ACA Non-FTE	6
677	101807668	Certified	Active	Ongoing	No	5.3	ACA Non-FTE	6
678	101807695	Certified	Active	Ongoing	No	5.6	ACA Non-FTE	6
679	101807750	Certified	Active	Ongoing	No	15.5	ACA Non-FTE	6
680	101808630	Certified	Active	Ongoing	No	24.8	ACA Non-FTE	6

Appendix B – Employee Detail
Solano Community College District

Ongoing Measurement Period
1/1/2014 – 12/31/2014

Count	Employee ID	Employment Classification	Active or Terminated?	Ongoing Employee or New Employee?	Currently Offered Medical Benefits?	Average Monthly Hours During Measurement Period	ACA FTE Status as of Stability Period Start Date	"Final Output" Bucket
681	101808690	Certified	Active	Ongoing	No	8.5	ACA Non-FTE	6
682	101808758	Certified	Active	Ongoing	No	30.6	ACA Non-FTE	6
683	101808785	Certified	Active	Ongoing	No	2.0	ACA Non-FTE	6
684	101809579	Certified	Active	Ongoing	No	28.4	ACA Non-FTE	6
685	101809836	Certified	Active	Ongoing	No	21.2	ACA Non-FTE	6
686	101812400	Non-Union	Active	New	No	4.2	ACA Non-FTE	8
687	101812468	Certified	Active	Ongoing	No	23.5	ACA Non-FTE	6
688	101813371	Certified	Active	Ongoing	No	14.7	ACA Non-FTE	6
689	101815272	Certified	Active	Ongoing	No	16.6	ACA Non-FTE	6
690	101818774	Certified	Active	Ongoing	No	31.6	ACA Non-FTE	6
691	101826351	Certified	Active	Ongoing	No	6.0	ACA Non-FTE	6
692	101827193	Certified	Active	Ongoing	No	1.6	ACA Non-FTE	6
693	101827224	Non-Union	Active	New	No	1.7	ACA Non-FTE	8
694	101840711	Non-Union	Active	Ongoing	No	93.1	ACA Non-FTE	6
695	101851494	Non-Union	Active	Ongoing	No	68.8	ACA Non-FTE	6
696	101853589	Non-Union	Active	Ongoing	No	20.7	ACA Non-FTE	6
697	101856439	Non-Union	Active	New	No	9.0	ACA Non-FTE	10
698	101870311	Non-Union	Active	Ongoing	No	77.6	ACA Non-FTE	6
699	101872696	Certified	Active	Ongoing	No	17.2	ACA Non-FTE	6
700	101873536	Non-Union	Active	New	No	14.0	ACA Non-FTE	8
701	101877327	Non-Union	Active	New	No	17.6	ACA Non-FTE	8
702	101887420	Non-Union	Active	New	No	43.4	ACA Non-FTE	10
703	101894373	Non-Union	Active	New	No	12.8	ACA Non-FTE	8
704	101898191	Non-Union	Active	Ongoing	No	57.1	ACA Non-FTE	6
705	101900150	Non-Union	Active	New	No	29.8	ACA Non-FTE	8
706	101905687	Non-Union	Active	New	No	23.6	ACA Non-FTE	10
707	101906346	Non-Union	Active	New	No	140.9	ACA Non-FTE	9
708	101906751	Non-Union	Active	New	No	37.0	ACA Non-FTE	10
709	101908142	Non-Union	Active	New	No	6.0	ACA Non-FTE	10
710	101909028	Non-Union	Active	New	No	12.5	ACA Non-FTE	8
711	101909615	Non-Union	Active	New	No	40.0	ACA Non-FTE	10
712	101910403	Non-Union	Active	New	No	12.0	ACA Non-FTE	10
713	101914430	Non-Union	Active	Ongoing	No	8.3	ACA Non-FTE	6
714	101915627	Certified	Active	Ongoing	No	2.0	ACA Non-FTE	6
715	101923485	Non-Union	Active	New	No	81.0	ACA Non-FTE	10
716	101923573	Non-Union	Active	New	No	59.3	ACA Non-FTE	10
717	101929366	Non-Union	Active	New	No	164.8	ACA FTE	7
718	101934029	Non-Union	Active	New	No	3.4	ACA Non-FTE	8
719	101950598	Non-Union	Active	New	No	59.9	ACA Non-FTE	10
720	101954500	Certified	Active	Ongoing	No	25.3	ACA Non-FTE	6

Appendix B – Employee Detail
Solano Community College District

Ongoing Measurement Period
1/1/2014 – 12/31/2014

Count	Employee ID	Employment Classification	Active or Terminated?	Ongoing Employee or New Employee?	Currently Offered Medical Benefits?	Average Monthly Hours During Measurement Period	ACA FTE Status as of Stability Period Start Date	"Final Output" Bucket
721	101968615	Non-Union	Active	New	No	41.2	ACA Non-FTE	10
722	101974782	Non-Union	Active	New	No	15.2	ACA Non-FTE	10
723	101980593	Certified	Active	Ongoing	No	25.2	ACA Non-FTE	6
724	101995902	Non-Union	Active	New	No	4.6	ACA Non-FTE	10
725	102000485	Certified	Active	Ongoing	No	5.2	ACA Non-FTE	6
726	102006307	Non-Union	Active	New	No	25.2	ACA Non-FTE	10
727	102006666	Non-Union	Active	Ongoing	No	26.9	ACA Non-FTE	6
728	102007403	Certified	Active	Ongoing	No	20.0	ACA Non-FTE	6
729	102007546	Non-Union	Active	New	No	82.0	ACA Non-FTE	10
730	102008656	Certified	Active	Ongoing	No	11.3	ACA Non-FTE	6
731	102013536	Certified	Active	Ongoing	No	10.9	ACA Non-FTE	6
732	102019886	Certified	Active	Ongoing	No	26.3	ACA Non-FTE	6
733	102020858	Non-Union	Active	New	No	66.7	ACA Non-FTE	10
734	102021563	Certified	Active	New	No	4.3	ACA Non-FTE	8
735	102023022	Certified	Active	Ongoing	No	30.2	ACA Non-FTE	6
736	102023912	Certified	Active	Ongoing	No	12.7	ACA Non-FTE	6
737	102024059	Certified	Active	Ongoing	No	27.1	ACA Non-FTE	6
738	102030224	Certified	Active	Ongoing	No	37.1	ACA Non-FTE	6
739	102030252	Certified	Active	Ongoing	No	1.2	ACA Non-FTE	6
740	102036986	Non-Union	Active	New	No	3.1	ACA Non-FTE	10
741	102040833	Non-Union	Active	New	No	14.1	ACA Non-FTE	10
742	102042822	Certified	Active	Ongoing	No	35.4	ACA Non-FTE	6
743	102057690	Certified	Active	Ongoing	No	1.5	ACA Non-FTE	6
744	102066675	Non-Union	Active	New	No	30.6	ACA Non-FTE	8
745	102071729	Non-Union	Active	Ongoing	No	34.2	ACA Non-FTE	6
746	102086766	Certified	Active	Ongoing	No	13.5	ACA Non-FTE	6
747	102093824	Non-Union	Active	Ongoing	No	16.9	ACA Non-FTE	6
748	102093853	Non-Union	Active	Ongoing	No	10.1	ACA Non-FTE	6
749	102124306	Certified	Active	New	No	7.6	ACA Non-FTE	8
750	102132770	Certified	Active	New	No	32.6	ACA Non-FTE	8
751	102140172	Non-Union	Active	Ongoing	No	28.6	ACA Non-FTE	6
752	102146702	Non-Union	Active	New	No	2.7	ACA Non-FTE	10
753	102151604	Non-Union	Active	Ongoing	No	0.1	ACA Non-FTE	6
754	102157988	Non-Union	Active	Ongoing	No	0.1	ACA Non-FTE	6
755	102158037	Certified	Active	New	No	22.2	ACA Non-FTE	8
756	102161916	Certified	Active	New	No	11.6	ACA Non-FTE	8
757	102161952	Certified	Active	New	No	0.9	ACA Non-FTE	8
758	102169782	Certified	Active	New	No	4.5	ACA Non-FTE	8
759	102169856	Certified	Active	New	No	19.9	ACA Non-FTE	8
760	102169911	Certified	Active	New	No	10.4	ACA Non-FTE	8

Appendix B – Employee Detail
Solano Community College District

Ongoing Measurement Period
1/1/2014 – 12/31/2014

Count	Employee ID	Employment Classification	Active or Terminated?	Ongoing Employee or New Employee?	Currently Offered Medical Benefits?	Average Monthly Hours During Measurement Period	ACA FTE Status as of Stability Period Start Date	"Final Output" Bucket
761	102171668	Certified	Active	New	No	13.9	ACA Non-FTE	8
762	102172726	Certified	Terminated	N/A	No	0.0	ACA Non-FTE	3
763	102172762	Certified	Active	New	No	28.5	ACA Non-FTE	8
764	102172781	Certified	Active	New	No	25.6	ACA Non-FTE	8
765	102172837	Certified	Active	New	No	30.8	ACA Non-FTE	8
766	102172874	Certified	Active	New	No	4.2	ACA Non-FTE	8
767	102172983	Certified	Active	New	No	31.8	ACA Non-FTE	8
768	102172984	Certified	Active	New	No	4.1	ACA Non-FTE	8
769	102173003	Certified	Active	New	No	16.4	ACA Non-FTE	8
770	102173044	Certified	Active	New	No	14.1	ACA Non-FTE	8
771	102186248	Certified	Active	New	No	10.3	ACA Non-FTE	8
772	102186249	Certified	Active	New	No	36.4	ACA Non-FTE	8
773	102186250	Certified	Active	New	No	42.4	ACA Non-FTE	8
774	102190857	Non-Union	Active	New	No	5.3	ACA Non-FTE	10
775	102212530	Certified	Active	New	No	28.7	ACA Non-FTE	8
776	102216938	Certified	Active	New	No	21.0	ACA Non-FTE	10
777	102217766	Certified	Active	New	No	15.2	ACA Non-FTE	8
778	102222793	Certified	Active	New	No	13.5	ACA Non-FTE	8
779	102222914	Certified	Active	New	No	13.5	ACA Non-FTE	8
780	102231980	Certified	Active	New	No	34.4	ACA Non-FTE	8
781	102232388	Certified	Active	New	No	16.4	ACA Non-FTE	8
782	102234834	Certified	Active	New	No	17.0	ACA Non-FTE	8
783	102243724	Non-Union	Active	New	No	3.3	ACA Non-FTE	10
784	102244264	Non-Union	Active	New	No	95.3	ACA Non-FTE	8
785	102246804	Non-Union	Active	New	No	52.1	ACA Non-FTE	10
786	102260748	Non-Union	Active	New	No	17.7	ACA Non-FTE	10
787	102263428	Certified	Active	New	No	29.1	ACA Non-FTE	8
788	102267196	Non-Union	Active	New	No	61.9	ACA Non-FTE	10
789	102269321	Non-Union	Active	New	No	75.4	ACA Non-FTE	10
790	102271789	Non-Union	Active	New	No	66.1	ACA Non-FTE	10
791	102279435	Non-Union	Active	Ongoing	No	112.7	ACA Non-FTE	6
792	102288058	Certified	Active	New	No	1.7	ACA Non-FTE	10
793	102288183	Certified	Active	New	No	35.2	ACA Non-FTE	10
794	102293947	Non-Union	Active	New	No	39.8	ACA Non-FTE	10
795	102328618	Non-Union	Active	New	No	93.9	ACA Non-FTE	10
796	102391296	Certified	Active	New	No	10.1	ACA Non-FTE	10
797	102391904	Certified	Active	New	No	7.6	ACA Non-FTE	10
798	102391924	Certified	Active	New	No	8.0	ACA Non-FTE	10
799	102392186	Certified	Active	New	No	16.0	ACA Non-FTE	10
800	102393487	Non-Union	Active	New	No	106.5	ACA Non-FTE	10

Appendix B – Employee Detail
Solano Community College District

Ongoing Measurement Period
1/1/2014 – 12/31/2014

Count	Employee ID	Employment Classification	Active or Terminated?	Ongoing Employee or New Employee?	Currently Offered Medical Benefits?	Average Monthly Hours During Measurement Period	ACA FTE Status as of Stability Period Start Date	"Final Output" Bucket
801	102393783	Non-Union	Active	New	No	0.0	ACA Non-FTE	10
802	102394917	Non-Union	Active	New	No	38.8	ACA Non-FTE	10
803	102399482	Non-Union	Active	New	No	32.3	ACA Non-FTE	10
804	102399962	Certified	Active	New	No	21.4	ACA Non-FTE	10
805	102400005	Certified	Active	New	No	77.4	ACA Non-FTE	10
806	102400020	Certified	Active	New	No	30.1	ACA Non-FTE	10
807	102400042	Certified	Active	New	No	29.9	ACA Non-FTE	10
808	102400541	Certified	Active	New	No	1.4	ACA Non-FTE	10
809	102401015	Certified	Active	New	No	0.8	ACA Non-FTE	10
810	102401464	Certified	Active	New	No	8.5	ACA Non-FTE	10
811	102401467	Certified	Active	New	No	31.8	ACA Non-FTE	10
812	102401875	Certified	Active	New	No	4.1	ACA Non-FTE	10
813	102402878	Non-Union	Active	New	No	67.5	ACA Non-FTE	10
814	102402888	Certified	Active	New	No	32.0	ACA Non-FTE	10
815	102404021	Non-Union	Active	New	No	58.1	ACA Non-FTE	10
816	102404819	Certified	Active	New	No	56.5	ACA Non-FTE	10
817	102405011	Certified	Active	New	No	29.3	ACA Non-FTE	10
818	102405041	Certified	Active	New	No	45.4	ACA Non-FTE	10
819	102405400	Certified	Active	New	No	16.3	ACA Non-FTE	10
820	102405896	Certified	Active	New	No	30.5	ACA Non-FTE	10
821	102406611	Certified	Active	New	No	10.4	ACA Non-FTE	10
822	102406674	Certified	Active	New	No	30.3	ACA Non-FTE	10
823	102406681	Certified	Active	New	No	37.4	ACA Non-FTE	10
824	102406682	Certified	Active	New	No	9.9	ACA Non-FTE	10
825	102406683	Certified	Active	New	No	24.6	ACA Non-FTE	10
826	102406707	Certified	Active	New	No	13.7	ACA Non-FTE	10
827	102407045	Non-Union	Active	New	No	137.5	ACA Non-FTE	9
828	102407338	Non-Union	Active	New	No	0.5	ACA Non-FTE	10
829	102407784	Certified	Active	New	No	22.8	ACA Non-FTE	10
830	190342	Non-Union	Active	N/A	Yes	N/A	ACA FTE	N/A
831	294650	Non-Union	Active	N/A	Yes	N/A	ACA FTE	N/A
832	102293708	Classified-Union	Active	New	Yes	N/A	ACA FTE	N/A
833	102168654	Classified-Union	Active	N/A	Yes	N/A	ACA FTE	N/A
834	121173	Certified	Active	N/A	Yes	N/A	ACA FTE	N/A
835	321659	Certified	Active	N/A	Yes	N/A	ACA FTE	N/A
836	67693	Certified	Active	N/A	Yes	N/A	ACA FTE	N/A
837	321605	Certified	Active	N/A	Yes	N/A	ACA FTE	N/A
838	162421	Certified	Active	N/A	Yes	N/A	ACA FTE	N/A
839	102217710	Certified	Active	N/A	Yes	N/A	ACA FTE	N/A
840	101693982	Certified	Active	N/A	Yes	N/A	ACA FTE	N/A

Appendix B – Employee Detail
Solano Community College District

Ongoing Measurement Period
1/1/2014 – 12/31/2014

Count	Employee ID	Employment Classification	Active or Terminated?	Ongoing Employee or New Employee?	Currently Offered Medical Benefits?	Average Monthly Hours During Measurement Period	ACA FTE Status as of Stability Period Start Date	"Final Output" Bucket
841	101245611	Certified	Active	N/A	Yes	N/A	ACA FTE	N/A
842	162793	Certified	Active	N/A	Yes	N/A	ACA FTE	N/A
843	102409058	Non-Union	Active	New	Yes	N/A	ACA FTE	N/A
844	147941	Classified-Union	Active	N/A	Yes	N/A	ACA FTE	N/A
845	102406866	Classified-Union	Active	N/A	Yes	N/A	ACA FTE	N/A
846	102402169	Non-Union	Active	N/A	Yes	N/A	ACA FTE	N/A
847	102386853	Certified	Active	N/A	Yes	N/A	ACA FTE	N/A
848	102395644	Certified	Active	N/A	Yes	N/A	ACA FTE	N/A
849	102396404	Certified	Active	N/A	Yes	N/A	ACA FTE	N/A
850	102396509	Certified	Active	N/A	Yes	N/A	ACA FTE	N/A
851	286668	Classified-Union	Active	N/A	Yes	N/A	ACA FTE	N/A
852	102401947	Non-Union	Active	N/A	Yes	N/A	ACA FTE	N/A
853	102404335	Non-Union	Active	N/A	Yes	N/A	ACA FTE	N/A
854	199299	Classified-Union	Active	N/A	Yes	N/A	ACA FTE	N/A
855	102402801	Certified	Active	N/A	Yes	N/A	ACA FTE	N/A
856	102402885	Non-Union	Active	N/A	Yes	N/A	ACA FTE	N/A
857	102401941	Non-Union	Active	N/A	Yes	N/A	ACA FTE	N/A
858	101310	Non-Union	Active	N/A	Yes	N/A	ACA FTE	N/A
859	102380592	Certified	Active	N/A	Yes	N/A	ACA FTE	N/A
860	102132787	Classified-Union	Active	N/A	Yes	N/A	ACA FTE	N/A
861	129858	Classified-Union	Active	N/A	Yes	N/A	ACA FTE	N/A
862	225523	Classified-Union	Active	N/A	Yes	N/A	ACA FTE	N/A
863	102288221	Certified	Active	N/A	Yes	N/A	ACA FTE	N/A
864	266151	Non-Union	Active	N/A	Yes	N/A	ACA FTE	N/A
865	102064316	Non-Union	Active	N/A	Yes	N/A	ACA FTE	N/A
866	102103854	Certified	Active	N/A	Yes	N/A	ACA FTE	N/A
867	101959893	Certified	Active	N/A	Yes	N/A	ACA FTE	N/A
868	152176	Classified-Union	Active	N/A	Yes	N/A	ACA FTE	N/A
869	190494	Classified-Union	Active	N/A	Yes	N/A	ACA FTE	N/A
870	251410	Classified-Union	Active	N/A	Yes	N/A	ACA FTE	N/A
871	102171001	Non-Union	Active	N/A	Yes	N/A	ACA FTE	N/A
872	101876	Classified-Union	Active	N/A	Yes	N/A	ACA FTE	N/A
873	215863	Classified-Union	Active	N/A	Yes	N/A	ACA FTE	N/A
874	60174	Classified-Union	Active	N/A	Yes	N/A	ACA FTE	N/A
875	224356	Classified-Union	Active	N/A	Yes	N/A	ACA FTE	N/A
876	149217	Classified-Union	Active	N/A	Yes	N/A	ACA FTE	N/A
877	199294	Classified-Union	Active	N/A	Yes	N/A	ACA FTE	N/A
878	68418	Non-Union	Active	N/A	Yes	N/A	ACA FTE	N/A
879	169019	Classified-Union	Active	N/A	Yes	N/A	ACA FTE	N/A
880	208730	Certified	Active	N/A	Yes	N/A	ACA FTE	N/A

Appendix B – Employee Detail
Solano Community College District

Ongoing Measurement Period
1/1/2014 – 12/31/2014

Count	Employee ID	Employment Classification	Active or Terminated?	Ongoing Employee or New Employee?	Currently Offered Medical Benefits?	Average Monthly Hours During Measurement Period	ACA FTE Status as of Stability Period Start Date	"Final Output" Bucket
881	234329	Certified	Active	N/A	Yes	N/A	ACA FTE	N/A
882	334945	Certified	Active	N/A	Yes	N/A	ACA FTE	N/A
883	101371177	Certified	Active	N/A	Yes	N/A	ACA FTE	N/A
884	101443810	Certified	Active	N/A	Yes	N/A	ACA FTE	N/A
885	101606474	Certified	Active	N/A	Yes	N/A	ACA FTE	N/A
886	101701309	Certified	Active	N/A	Yes	N/A	ACA FTE	N/A
887	101930370	Certified	Active	N/A	Yes	N/A	ACA FTE	N/A
888	101953985	Certified	Active	N/A	Yes	N/A	ACA FTE	N/A
889	101954050	Certified	Active	N/A	Yes	N/A	ACA FTE	N/A
890	101968296	Certified	Active	N/A	Yes	N/A	ACA FTE	N/A
891	102000405	Certified	Active	N/A	Yes	N/A	ACA FTE	N/A
892	102000421	Certified	Active	N/A	Yes	N/A	ACA FTE	N/A
893	101726965	Classified-Union	Active	N/A	Yes	N/A	ACA FTE	N/A
894	325034	Classified-Union	Active	N/A	Yes	N/A	ACA FTE	N/A
895	280317	Certified	Active	N/A	Yes	N/A	ACA FTE	N/A
896	92555	Classified-Union	Active	N/A	Yes	N/A	ACA FTE	N/A
897	194800	Certified	Active	N/A	Yes	N/A	ACA FTE	N/A
898	101956178	Certified	Active	N/A	Yes	N/A	ACA FTE	N/A
899	60218	Classified-Union	Active	N/A	Yes	N/A	ACA FTE	N/A
900	64692	Classified-Union	Active	N/A	Yes	N/A	ACA FTE	N/A
901	87900	Non-Union	Active	N/A	Yes	N/A	ACA FTE	N/A
902	320380	Non-Union	Active	N/A	Yes	N/A	ACA FTE	N/A
903	101968480	Non-Union	Active	N/A	Yes	N/A	ACA FTE	N/A
904	221515	Classified-Union	Active	N/A	Yes	N/A	ACA FTE	N/A
905	101669899	Classified-Union	Active	N/A	Yes	N/A	ACA FTE	N/A
906	101945645	Non-Union	Active	N/A	Yes	N/A	ACA FTE	N/A
907	101937074	Classified-Union	Active	N/A	Yes	N/A	ACA FTE	N/A
908	77142	Classified-Union	Active	N/A	Yes	N/A	ACA FTE	N/A
909	101606002	Classified-Union	Active	N/A	Yes	N/A	ACA FTE	N/A
910	101872755	Certified	Active	N/A	Yes	N/A	ACA FTE	N/A
911	318026	Classified-Union	Active	N/A	Yes	N/A	ACA FTE	N/A
912	101715044	Classified-Union	Active	N/A	Yes	N/A	ACA FTE	N/A
913	101863216	Classified-Union	Active	N/A	Yes	N/A	ACA FTE	N/A
914	101691826	Certified	Active	N/A	Yes	N/A	ACA FTE	N/A
915	321816	Certified	Active	N/A	Yes	N/A	ACA FTE	N/A
916	82156	Classified-Union	Active	N/A	Yes	N/A	ACA FTE	N/A
917	101702917	Non-Union	Active	N/A	Yes	N/A	ACA FTE	N/A
918	101723117	Certified	Active	N/A	Yes	N/A	ACA FTE	N/A
919	101592206	Certified	Active	N/A	Yes	N/A	ACA FTE	N/A
920	141990	Non-Union	Active	N/A	Yes	N/A	ACA FTE	N/A

Appendix B – Employee Detail
Solano Community College District

Ongoing Measurement Period
1/1/2014 – 12/31/2014

Count	Employee ID	Employment Classification	Active or Terminated?	Ongoing Employee or New Employee?	Currently Offered Medical Benefits?	Average Monthly Hours During Measurement Period	ACA FTE Status as of Stability Period Start Date	"Final Output" Bucket
921	101717906	Classified-Union	Active	N/A	Yes	N/A	ACA FTE	N/A
922	101717512	Non-Union	Active	N/A	Yes	N/A	ACA FTE	N/A
923	297701	Classified-Union	Active	N/A	Yes	N/A	ACA FTE	N/A
924	200465	Classified-Union	Active	N/A	Yes	N/A	ACA FTE	N/A
925	238138	Classified-Union	Active	N/A	Yes	N/A	ACA FTE	N/A
926	274575	Classified-Union	Active	N/A	Yes	N/A	ACA FTE	N/A
927	341490	Classified-Union	Active	N/A	Yes	N/A	ACA FTE	N/A
928	101640994	Classified-Union	Active	N/A	Yes	N/A	ACA FTE	N/A
929	118068	Classified-Union	Active	N/A	Yes	N/A	ACA FTE	N/A
930	101002790	Classified-Union	Active	N/A	Yes	N/A	ACA FTE	N/A
931	191989	Classified-Union	Active	N/A	Yes	N/A	ACA FTE	N/A
932	177313	Non-Union	Active	N/A	Yes	N/A	ACA FTE	N/A
933	101695229	Classified-Union	Active	N/A	Yes	N/A	ACA FTE	N/A
934	101690630	Non-Union	Active	N/A	Yes	N/A	ACA FTE	N/A
935	101682027	Certified	Active	N/A	Yes	N/A	ACA FTE	N/A
936	101691004	Certified	Active	N/A	Yes	N/A	ACA FTE	N/A
937	276011	Classified-Union	Active	N/A	Yes	N/A	ACA FTE	N/A
938	187530	Classified-Union	Active	N/A	Yes	N/A	ACA FTE	N/A
939	101606450	Non-Union	Active	N/A	Yes	N/A	ACA FTE	N/A
940	195253	Non-Union	Active	N/A	Yes	N/A	ACA FTE	N/A
941	101606021	Classified-Union	Active	N/A	Yes	N/A	ACA FTE	N/A
942	215810	Classified-Union	Active	N/A	Yes	N/A	ACA FTE	N/A
943	101458616	Classified-Union	Active	N/A	Yes	N/A	ACA FTE	N/A
944	101592144	Classified-Union	Active	N/A	Yes	N/A	ACA FTE	N/A
945	101063617	Classified-Union	Active	N/A	Yes	N/A	ACA FTE	N/A
946	214630	Classified-Union	Active	N/A	Yes	N/A	ACA FTE	N/A
947	150028	Classified-Union	Active	N/A	Yes	N/A	ACA FTE	N/A
948	137662	Non-Union	Active	N/A	Yes	N/A	ACA FTE	N/A
949	296226	Certified	Active	N/A	Yes	N/A	ACA FTE	N/A
950	101256709	Certified	Active	N/A	Yes	N/A	ACA FTE	N/A
951	201613	Certified	Active	N/A	Yes	N/A	ACA FTE	N/A
952	101067065	Classified-Union	Active	N/A	Yes	N/A	ACA FTE	N/A
953	294523	Certified	Active	N/A	Yes	N/A	ACA FTE	N/A
954	347852	Certified	Active	N/A	Yes	N/A	ACA FTE	N/A
955	353416	Certified	Active	N/A	Yes	N/A	ACA FTE	N/A
956	353447	Certified	Active	N/A	Yes	N/A	ACA FTE	N/A
957	101016435	Certified	Active	N/A	Yes	N/A	ACA FTE	N/A
958	101016445	Certified	Active	N/A	Yes	N/A	ACA FTE	N/A
959	101046959	Classified-Union	Active	N/A	Yes	N/A	ACA FTE	N/A
960	321152	Certified	Active	N/A	Yes	N/A	ACA FTE	N/A

Appendix B – Employee Detail
Solano Community College District

Ongoing Measurement Period
1/1/2014 – 12/31/2014

Count	Employee ID	Employment Classification	Active or Terminated?	Ongoing Employee or New Employee?	Currently Offered Medical Benefits?	Average Monthly Hours During Measurement Period	ACA FTE Status as of Stability Period Start Date	"Final Output" Bucket
961	85878	Certified	Active	N/A	Yes	N/A	ACA FTE	N/A
962	259755	Classified-Union	Active	N/A	Yes	N/A	ACA FTE	N/A
963	75147	Classified-Union	Active	N/A	Yes	N/A	ACA FTE	N/A
964	349556	Classified-Union	Active	N/A	Yes	N/A	ACA FTE	N/A
965	323038	Classified-Union	Active	N/A	Yes	N/A	ACA FTE	N/A
966	353422	Classified-Union	Active	N/A	Yes	N/A	ACA FTE	N/A
967	348153	Non-Union	Active	N/A	Yes	N/A	ACA FTE	N/A
968	101020793	Certified	Active	N/A	Yes	N/A	ACA FTE	N/A
969	93848	Certified	Active	N/A	Yes	N/A	ACA FTE	N/A
970	181371	Classified-Union	Active	N/A	Yes	N/A	ACA FTE	N/A
971	111717	Classified-Union	Active	N/A	Yes	N/A	ACA FTE	N/A
972	236216	Classified-Union	Active	N/A	Yes	N/A	ACA FTE	N/A
973	320175	Classified-Union	Active	N/A	Yes	N/A	ACA FTE	N/A
974	343522	Classified-Union	Active	N/A	Yes	N/A	ACA FTE	N/A
975	225844	Classified-Union	Active	N/A	Yes	N/A	ACA FTE	N/A
976	279546	Non-Union	Active	N/A	Yes	N/A	ACA FTE	N/A
977	180970	Classified-Union	Active	N/A	Yes	N/A	ACA FTE	N/A
978	286632	Classified-Union	Active	N/A	Yes	N/A	ACA FTE	N/A
979	319984	Classified-Union	Active	N/A	Yes	N/A	ACA FTE	N/A
980	326818	Classified-Union	Active	N/A	Yes	N/A	ACA FTE	N/A
981	134099	Certified	Active	N/A	Yes	N/A	ACA FTE	N/A
982	177470	Certified	Active	N/A	Yes	N/A	ACA FTE	N/A
983	320098	Certified	Active	N/A	Yes	N/A	ACA FTE	N/A
984	320230	Certified	Active	N/A	Yes	N/A	ACA FTE	N/A
985	320560	Certified	Active	N/A	Yes	N/A	ACA FTE	N/A
986	320784	Certified	Active	N/A	Yes	N/A	ACA FTE	N/A
987	321421	Certified	Active	N/A	Yes	N/A	ACA FTE	N/A
988	329374	Certified	Active	N/A	Yes	N/A	ACA FTE	N/A
989	329375	Certified	Active	N/A	Yes	N/A	ACA FTE	N/A
990	329985	Certified	Active	N/A	Yes	N/A	ACA FTE	N/A
991	329986	Certified	Active	N/A	Yes	N/A	ACA FTE	N/A
992	294918	Certified	Active	N/A	Yes	N/A	ACA FTE	N/A
993	319953	Classified-Union	Active	N/A	Yes	N/A	ACA FTE	N/A
994	327598	Classified-Union	Active	N/A	Yes	N/A	ACA FTE	N/A
995	296470	Classified-Union	Active	N/A	Yes	N/A	ACA FTE	N/A
996	126490	Classified-Union	Active	N/A	Yes	N/A	ACA FTE	N/A
997	321251	Classified-Union	Active	N/A	Yes	N/A	ACA FTE	N/A
998	109372	Classified-Union	Active	N/A	Yes	N/A	ACA FTE	N/A
999	321401	Classified-Union	Active	N/A	Yes	N/A	ACA FTE	N/A
1000	70185	Classified-Union	Active	N/A	Yes	N/A	ACA FTE	N/A

Appendix B – Employee Detail
Solano Community College District

Ongoing Measurement Period
1/1/2014 – 12/31/2014

Count	Employee ID	Employment Classification	Active or Terminated?	Ongoing Employee or New Employee?	Currently Offered Medical Benefits?	Average Monthly Hours During Measurement Period	ACA FTE Status as of Stability Period Start Date	"Final Output" Bucket
1001	202889	Classified-Union	Active	N/A	Yes	N/A	ACA FTE	N/A
1002	256681	Classified-Union	Active	N/A	Yes	N/A	ACA FTE	N/A
1003	319938	Certified	Active	N/A	Yes	N/A	ACA FTE	N/A
1004	320262	Certified	Active	N/A	Yes	N/A	ACA FTE	N/A
1005	320531	Certified	Active	N/A	Yes	N/A	ACA FTE	N/A
1006	320772	Certified	Active	N/A	Yes	N/A	ACA FTE	N/A
1007	320830	Certified	Active	N/A	Yes	N/A	ACA FTE	N/A
1008	321376	Certified	Active	N/A	Yes	N/A	ACA FTE	N/A
1009	321609	Certified	Active	N/A	Yes	N/A	ACA FTE	N/A
1010	224249	Classified-Union	Active	N/A	Yes	N/A	ACA FTE	N/A
1011	148035	Classified-Union	Active	N/A	Yes	N/A	ACA FTE	N/A
1012	195350	Classified-Union	Active	N/A	Yes	N/A	ACA FTE	N/A
1013	199026	Classified-Union	Active	N/A	Yes	N/A	ACA FTE	N/A
1014	223072	Classified-Union	Active	N/A	Yes	N/A	ACA FTE	N/A
1015	272644	Classified-Union	Active	N/A	Yes	N/A	ACA FTE	N/A
1016	190483	Non-Union	Active	N/A	Yes	N/A	ACA FTE	N/A
1017	204000	Non-Union	Active	N/A	Yes	N/A	ACA FTE	N/A
1018	207522	Classified-Union	Active	N/A	Yes	N/A	ACA FTE	N/A
1019	181321	Certified	Active	N/A	Yes	N/A	ACA FTE	N/A
1020	103539	Certified	Active	N/A	Yes	N/A	ACA FTE	N/A
1021	143897	Certified	Active	N/A	Yes	N/A	ACA FTE	N/A
1022	199112	Classified-Union	Active	N/A	Yes	N/A	ACA FTE	N/A
1023	84921	Certified	Active	N/A	Yes	N/A	ACA FTE	N/A
1024	91520	Certified	Active	N/A	Yes	N/A	ACA FTE	N/A
1025	107843	Certified	Active	N/A	Yes	N/A	ACA FTE	N/A
1026	156288	Certified	Active	N/A	Yes	N/A	ACA FTE	N/A
1027	236879	Certified	Active	N/A	Yes	N/A	ACA FTE	N/A
1028	267485	Certified	Active	N/A	Yes	N/A	ACA FTE	N/A
1029	272892	Certified	Active	N/A	Yes	N/A	ACA FTE	N/A
1030	310205	Certified	Active	N/A	Yes	N/A	ACA FTE	N/A
1031	317670	Certified	Active	N/A	Yes	N/A	ACA FTE	N/A
1032	320741	Certified	Active	N/A	Yes	N/A	ACA FTE	N/A
1033	321180	Certified	Active	N/A	Yes	N/A	ACA FTE	N/A
1034	321325	Certified	Active	N/A	Yes	N/A	ACA FTE	N/A
1035	90580	Classified-Union	Active	N/A	Yes	N/A	ACA FTE	N/A
1036	321612	Classified-Union	Active	N/A	Yes	N/A	ACA FTE	N/A
1037	162040	Classified-Union	Active	N/A	Yes	N/A	ACA FTE	N/A
1038	321435	Certified	Active	N/A	Yes	N/A	ACA FTE	N/A
1039	101889	Classified-Union	Active	N/A	Yes	N/A	ACA FTE	N/A
1040	117054	Classified-Union	Active	N/A	Yes	N/A	ACA FTE	N/A

Appendix B – Employee Detail
Solano Community College District

Ongoing Measurement Period
1/1/2014 – 12/31/2014

Count	Employee ID	Employment Classification	Active or Terminated?	Ongoing Employee or New Employee?	Currently Offered Medical Benefits?	Average Monthly Hours During Measurement Period	ACA FTE Status as of Stability Period Start Date	"Final Output" Bucket
1041	296136	Classified-Union	Active	N/A	Yes	N/A	ACA FTE	N/A
1042	321791	Certified	Active	N/A	Yes	N/A	ACA FTE	N/A
1043	150566	Classified-Union	Active	N/A	Yes	N/A	ACA FTE	N/A
1044	309051	Certified	Active	N/A	Yes	N/A	ACA FTE	N/A
1045	319969	Certified	Active	N/A	Yes	N/A	ACA FTE	N/A
1046	320121	Certified	Active	N/A	Yes	N/A	ACA FTE	N/A
1047	321143	Certified	Active	N/A	Yes	N/A	ACA FTE	N/A
1048	321370	Certified	Active	N/A	Yes	N/A	ACA FTE	N/A
1049	321642	Certified	Active	N/A	Yes	N/A	ACA FTE	N/A
1050	199879	Classified-Union	Active	N/A	Yes	N/A	ACA FTE	N/A
1051	321423	Classified-Union	Active	N/A	Yes	N/A	ACA FTE	N/A
1052	320085	Certified	Active	N/A	Yes	N/A	ACA FTE	N/A
1053	111050	Certified	Active	N/A	Yes	N/A	ACA FTE	N/A
1054	91744	Certified	Active	N/A	Yes	N/A	ACA FTE	N/A
1055	242507	Classified-Union	Active	N/A	Yes	N/A	ACA FTE	N/A
1056	79927	Certified	Active	N/A	Yes	N/A	ACA FTE	N/A
1057	269717	Certified	Active	N/A	Yes	N/A	ACA FTE	N/A
1058	288067	Certified	Active	N/A	Yes	N/A	ACA FTE	N/A
1059	315869	Certified	Active	N/A	Yes	N/A	ACA FTE	N/A
1060	320169	Certified	Active	N/A	Yes	N/A	ACA FTE	N/A
1061	168492	Classified-Union	Active	N/A	Yes	N/A	ACA FTE	N/A
1062	219726	Classified-Union	Active	N/A	Yes	N/A	ACA FTE	N/A
1063	175556	Classified-Union	Active	N/A	Yes	N/A	ACA FTE	N/A
1064	287047	Classified-Union	Active	N/A	Yes	N/A	ACA FTE	N/A
1065	320152	Certified	Active	N/A	Yes	N/A	ACA FTE	N/A
1066	135609	Certified	Active	N/A	Yes	N/A	ACA FTE	N/A
1067	242741	Certified	Active	N/A	Yes	N/A	ACA FTE	N/A
1068	100118	Classified-Union	Active	N/A	Yes	N/A	ACA FTE	N/A
1069	94176	Certified	Active	N/A	Yes	N/A	ACA FTE	N/A
1070	140049	Certified	Active	N/A	Yes	N/A	ACA FTE	N/A
1071	173222	Certified	Active	N/A	Yes	N/A	ACA FTE	N/A
1072	186459	Certified	Active	N/A	Yes	N/A	ACA FTE	N/A
1073	260136	Certified	Active	N/A	Yes	N/A	ACA FTE	N/A
1074	320543	Certified	Active	N/A	Yes	N/A	ACA FTE	N/A
1075	320611	Certified	Active	N/A	Yes	N/A	ACA FTE	N/A
1076	321031	Certified	Active	N/A	Yes	N/A	ACA FTE	N/A
1077	321048	Certified	Active	N/A	Yes	N/A	ACA FTE	N/A
1078	75945	Classified-Union	Active	N/A	Yes	N/A	ACA FTE	N/A
1079	240888	Certified	Active	N/A	Yes	N/A	ACA FTE	N/A
1080	100112	Classified-Union	Active	N/A	Yes	N/A	ACA FTE	N/A

Appendix B – Employee Detail
Solano Community College District

Ongoing Measurement Period
1/1/2014 – 12/31/2014

Count	Employee ID	Employment Classification	Active or Terminated?	Ongoing Employee or New Employee?	Currently Offered Medical Benefits?	Average Monthly Hours During Measurement Period	ACA FTE Status as of Stability Period Start Date	"Final Output" Bucket
1081	153153	Certified	Active	N/A	Yes	N/A	ACA FTE	N/A
1082	231753	Classified-Union	Active	N/A	Yes	N/A	ACA FTE	N/A
1083	321900	Certified	Active	N/A	Yes	N/A	ACA FTE	N/A
1084	296721	Classified-Union	Active	N/A	Yes	N/A	ACA FTE	N/A
1085	236541	Classified-Union	Active	N/A	Yes	N/A	ACA FTE	N/A
1086	321139	Classified-Union	Active	N/A	Yes	N/A	ACA FTE	N/A
1087	79924	Certified	Active	N/A	Yes	N/A	ACA FTE	N/A
1088	83636	Certified	Active	N/A	Yes	N/A	ACA FTE	N/A
1089	98485	Certified	Active	N/A	Yes	N/A	ACA FTE	N/A
1090	138012	Certified	Active	N/A	Yes	N/A	ACA FTE	N/A
1091	286129	Certified	Active	N/A	Yes	N/A	ACA FTE	N/A
1092	320103	Certified	Active	N/A	Yes	N/A	ACA FTE	N/A
1093	320995	Certified	Active	N/A	Yes	N/A	ACA FTE	N/A
1094	321269	Certified	Active	N/A	Yes	N/A	ACA FTE	N/A
1095	321279	Certified	Active	N/A	Yes	N/A	ACA FTE	N/A
1096	321751	Certified	Active	N/A	Yes	N/A	ACA FTE	N/A
1097	102972	Certified	Active	N/A	Yes	N/A	ACA FTE	N/A
1098	218211	Classified-Union	Active	N/A	Yes	N/A	ACA FTE	N/A
1099	205185	Certified	Active	N/A	Yes	N/A	ACA FTE	N/A
1100	218510	Classified-Union	Active	N/A	Yes	N/A	ACA FTE	N/A
1101	202391	Certified	Active	N/A	Yes	N/A	ACA FTE	N/A
1102	320440	Certified	Active	N/A	Yes	N/A	ACA FTE	N/A
1103	164693	Classified-Union	Active	N/A	Yes	N/A	ACA FTE	N/A
1104	281252	Classified-Union	Active	N/A	Yes	N/A	ACA FTE	N/A
1105	320434	Certified	Active	N/A	Yes	N/A	ACA FTE	N/A
1106	238054	Certified	Active	N/A	Yes	N/A	ACA FTE	N/A
1107	66249	Certified	Active	N/A	Yes	N/A	ACA FTE	N/A
1108	175252	Certified	Active	N/A	Yes	N/A	ACA FTE	N/A
1109	223267	Certified	Active	N/A	Yes	N/A	ACA FTE	N/A
1110	267680	Certified	Active	N/A	Yes	N/A	ACA FTE	N/A
1111	124137	Classified-Union	Active	N/A	Yes	N/A	ACA FTE	N/A
1112	292337	Classified-Union	Active	N/A	Yes	N/A	ACA FTE	N/A
1113	193054	Classified-Union	Active	N/A	Yes	N/A	ACA FTE	N/A
1114	123573	Classified-Union	Active	N/A	Yes	N/A	ACA FTE	N/A
1115	253276	Certified	Active	N/A	Yes	N/A	ACA FTE	N/A
1116	304533	Classified-Union	Active	N/A	Yes	N/A	ACA FTE	N/A
1117	243790	Certified	Active	N/A	Yes	N/A	ACA FTE	N/A
1118	210232	Certified	Active	N/A	Yes	N/A	ACA FTE	N/A
1119	289589	Certified	Active	N/A	Yes	N/A	ACA FTE	N/A
1120	319915	Certified	Active	N/A	Yes	N/A	ACA FTE	N/A

Appendix B – Employee Detail
Solano Community College District

Ongoing Measurement Period
1/1/2014 – 12/31/2014

Count	Employee ID	Employment Classification	Active or Terminated?	Ongoing Employee or New Employee?	Currently Offered Medical Benefits?	Average Monthly Hours During Measurement Period	ACA FTE Status as of Stability Period Start Date	"Final Output" Bucket
1121	229341	Certified	Active	N/A	Yes	N/A	ACA FTE	N/A
1122	320186	Certified	Active	N/A	Yes	N/A	ACA FTE	N/A
1123	117284	Classified-Union	Active	N/A	Yes	N/A	ACA FTE	N/A
1124	320265	Certified	Active	N/A	Yes	N/A	ACA FTE	N/A
1125	124621	Certified	Active	N/A	Yes	N/A	ACA FTE	N/A
1126	320249	Certified	Active	N/A	Yes	N/A	ACA FTE	N/A
1127	320568	Certified	Active	N/A	Yes	N/A	ACA FTE	N/A
1128	319987	Classified-Union	Active	N/A	Yes	N/A	ACA FTE	N/A
1129	320382	Classified-Union	Active	N/A	Yes	N/A	ACA FTE	N/A
1130	320237	Certified	Active	N/A	Yes	N/A	ACA FTE	N/A
1131	148854	Non-Union	Active	N/A	Yes	N/A	ACA FTE	N/A
1132	223570	Classified-Union	Active	N/A	Yes	N/A	ACA FTE	N/A
1133	130478	Certified	Active	N/A	Yes	N/A	ACA FTE	N/A
1134	298598	Classified-Union	Active	N/A	Yes	N/A	ACA FTE	N/A
1135	265330	Certified	Active	N/A	Yes	N/A	ACA FTE	N/A
1136	320132	Certified	Active	N/A	Yes	N/A	ACA FTE	N/A
1137	117444	Classified-Union	Active	N/A	Yes	N/A	ACA FTE	N/A
1138	121825	Classified-Union	Active	N/A	Yes	N/A	ACA FTE	N/A
1139	235610	Certified	Active	N/A	Yes	N/A	ACA FTE	N/A
1140	118048	Certified	Active	N/A	Yes	N/A	ACA FTE	N/A
1141	135297	Certified	Active	N/A	Yes	N/A	ACA FTE	N/A
1142	239543	Certified	Active	N/A	Yes	N/A	ACA FTE	N/A
1143	320233	Certified	Active	N/A	Yes	N/A	ACA FTE	N/A
1144	320703	Certified	Active	N/A	Yes	N/A	ACA FTE	N/A
1145	66128	Certified	Active	N/A	Yes	N/A	ACA FTE	N/A
1146	123176	Certified	Active	N/A	Yes	N/A	ACA FTE	N/A
1147	294604	Classified-Union	Active	N/A	Yes	N/A	ACA FTE	N/A
1148	308585	Certified	Active	N/A	Yes	N/A	ACA FTE	N/A
1149	68540	Certified	Active	N/A	Yes	N/A	ACA FTE	N/A
1150	215816	Classified-Union	Active	N/A	Yes	N/A	ACA FTE	N/A
1151	66080	Classified-Union	Active	N/A	Yes	N/A	ACA FTE	N/A
1152	110852	Classified-Union	Active	N/A	Yes	N/A	ACA FTE	N/A
1153	313892	Classified-Union	Active	N/A	Yes	N/A	ACA FTE	N/A
1154	212414	Classified-Union	Active	N/A	Yes	N/A	ACA FTE	N/A
1155	189420	Certified	Active	N/A	Yes	N/A	ACA FTE	N/A
1156	297247	Classified-Union	Active	N/A	Yes	N/A	ACA FTE	N/A
1157	275626	Classified-Union	Active	N/A	Yes	N/A	ACA FTE	N/A
1158	310247	Classified-Union	Active	N/A	Yes	N/A	ACA FTE	N/A
1159	268370	Classified-Union	Active	N/A	Yes	N/A	ACA FTE	N/A
1160	250181	Certified	Active	N/A	Yes	N/A	ACA FTE	N/A

Appendix B – Employee Detail
Solano Community College District

Ongoing Measurement Period
1/1/2014 – 12/31/2014

Count	Employee ID	Employment Classification	Active or Terminated?	Ongoing Employee or New Employee?	Currently Offered Medical Benefits?	Average Monthly Hours During Measurement Period	ACA FTE Status as of Stability Period Start Date	"Final Output" Bucket
1161	273610	Classified-Union	Active	N/A	Yes	N/A	ACA FTE	N/A
1162	114820	Certified	Active	N/A	Yes	N/A	ACA FTE	N/A
1163	224189	Classified-Union	Retired	N/A	Yes	N/A	ACA Non-FTE	N/A
1164	203309	Certified	Retired	N/A	No	N/A	ACA Non-FTE	N/A
1165	212694	Classified-Union	Retired	N/A	Yes	N/A	ACA Non-FTE	N/A
1166	79481	Certified	Retired	N/A	Yes	N/A	ACA Non-FTE	N/A
1167	279717	Non-Union	Retired	N/A	Yes	N/A	ACA Non-FTE	N/A
1168	89278	Classified-Union	Retired	N/A	Yes	N/A	ACA Non-FTE	N/A
1169	114302	Certified	Retired	N/A	Yes	N/A	ACA Non-FTE	N/A
1170	255373	Classified-Union	Retired	N/A	Yes	N/A	ACA Non-FTE	N/A
1171	187702	Classified-Union	Retired	N/A	No	N/A	ACA Non-FTE	N/A
1172	121425	Classified-Union	Retired	N/A	No	N/A	ACA Non-FTE	N/A
1173	215869	Classified-Union	Retired	N/A	No	N/A	ACA Non-FTE	N/A
1174	194505	Classified-Union	Retired	N/A	No	N/A	ACA Non-FTE	N/A
1175	70283	Classified-Union	Retired	N/A	No	N/A	ACA Non-FTE	N/A
1176	282156	Certified	Retired	N/A	No	N/A	ACA Non-FTE	N/A
1177	321076	Certified	Retired	N/A	No	N/A	ACA Non-FTE	N/A
1178	304442	Certified	Retired	N/A	No	N/A	ACA Non-FTE	N/A
1179	101690731	Non-Union	Terminated	N/A	No	N/A	ACA Non-FTE	N/A
1180	310126	Classified-Union	Terminated	N/A	No	N/A	ACA Non-FTE	N/A
1181	101605594	Non-Union	Terminated	N/A	No	N/A	ACA Non-FTE	N/A
1182	102397833	Certified	Terminated	N/A	No	N/A	ACA Non-FTE	N/A
1183	287532	Classified-Union	Terminated	N/A	No	N/A	ACA Non-FTE	N/A
1184	101575106	Classified-Union	Terminated	N/A	No	N/A	ACA Non-FTE	N/A
1185	301274	Classified-Union	Terminated	N/A	No	N/A	ACA Non-FTE	N/A
1186	199293	Non-Union	Terminated	N/A	No	N/A	ACA Non-FTE	N/A
1187	102267237	Classified-Union	Terminated	N/A	No	N/A	ACA Non-FTE	N/A
1188	102131887	Classified-Union	Terminated	N/A	No	N/A	ACA Non-FTE	N/A
1189	101092021	Classified-Union	Terminated	N/A	No	N/A	ACA Non-FTE	N/A
1190	101696673	Certified	Terminated	N/A	No	N/A	ACA Non-FTE	N/A
1191	119344	Certified	Terminated	N/A	No	N/A	ACA Non-FTE	N/A
1192	321305	Certified	Terminated	N/A	No	N/A	ACA Non-FTE	N/A
1193	102101228	Non-Union	Terminated	N/A	No	N/A	ACA Non-FTE	N/A
1194	255530	Classified-Union	Terminated	N/A	No	N/A	ACA Non-FTE	N/A
1195	101952720	Classified-Union	Terminated	N/A	No	N/A	ACA Non-FTE	N/A